



Modern Comfort

Nelson



Karen Bennett
Bennett Family Real Estate

karen@nelsonproperty.com

1007 JOSEPHINE ST



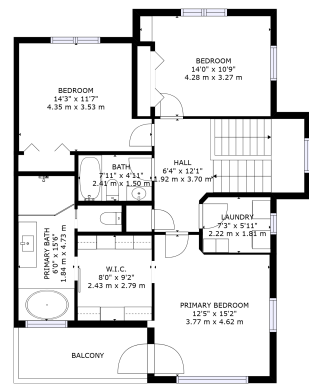
Karen Bennett
Bennett Family Real Estate



TOTAL: 2163 sq. ft. 201 m²
 Below Ground: 452 sq. ft., 42 m²; FLOOR 2: 762 sq. ft., 71 m²; FLOOR 3: 948 sq. ft., 88 m²
 EXCLUDED AREAS: GARAGE: 334 sq. ft., 31 m²; STORAGE/MECH ROOM: 153 sq. ft., 14 m²; STORAGE: 49 sq. ft., 5 m²
 PATIO: 480 sq. ft., 45 m²; PORCH: 237 sq. ft., 22 m²; FIREPLACE: 21 sq. ft., 2 m²
 BALCONY: 76 sq. ft., 7 m²

FLOOR 1

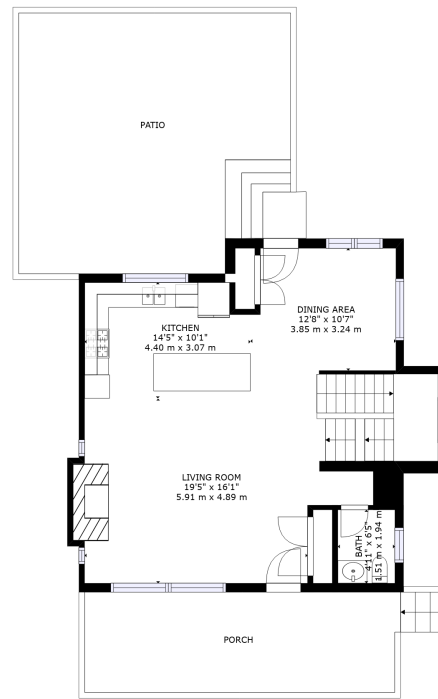
Matterport



TOTAL: 2162 sq. ft. 201 m²
 Below Ground: 452 sq. ft., 42 m²; FLOOR 2: 762 sq. ft., 71 m²; FLOOR 3: 948 sq. ft., 88 m²
 EXCLUDED AREAS: GARAGE: 334 sq. ft., 31 m²; STORAGE/MECH ROOM: 153 sq. ft., 14 m²; STORAGE: 49 sq. ft., 5 m²
 PATIO: 480 sq. ft., 45 m²; PORCH: 237 sq. ft., 22 m²; FIREPLACE: 21 sq. ft., 2 m²
 BALCONY: 76 sq. ft., 7 m²

FLOOR 2

Matterport



TOTAL: 2162 sq. ft. 201 m²
 Below Ground: 452 sq. ft., 42 m²; FLOOR 2: 762 sq. ft., 71 m²; FLOOR 3: 948 sq. ft., 88 m²
 EXCLUDED AREAS: GARAGE: 334 sq. ft., 31 m²; STORAGE/MECH ROOM: 153 sq. ft., 14 m²; STORAGE: 49 sq. ft., 5 m²
 PATIO: 480 sq. ft., 45 m²; PORCH: 237 sq. ft., 22 m²; FIREPLACE: 21 sq. ft., 2 m²
 BALCONY: 76 sq. ft., 7 m²

FLOOR 3

SIZES AND DIMENSIONS ARE APPROXIMATE, ACTUAL MAY VARY.

Matterport



1007 JOSEPHINE ST

Welcome to this stunning, recently built residence in Nelson, BC. This 4-bedroom, 4-bathroom home offers a blend of comfort and functionality. The open-concept living area is flooded with natural light and leads to a gourmet kitchen with modern appliances. The master bedroom features an ensuite bathroom, walk-in closet, and private balcony with mountain views. Additional bedrooms provide space for guests or a home office. With a garage and off-street parking, convenience is ensured. Located near hiking trails and downtown amenities, this home offers the perfect balance of nature and urban living. Schedule a viewing today!

Karen Bennett
 Bennett Family Real Estate

Age
 Bedrooms
 Bathrooms
 Lot Size
 Floor Space

Age
 Taxes
 Tax Year
 MLS#
 Parking

5245.31
 2023

To view interactive floor plans scan this QR code with your smart phone



karen@nelsonproperty.com

