

# Hatley Ridge

Colwood



5-2210 Sooke Rd



**Andrew Plank**

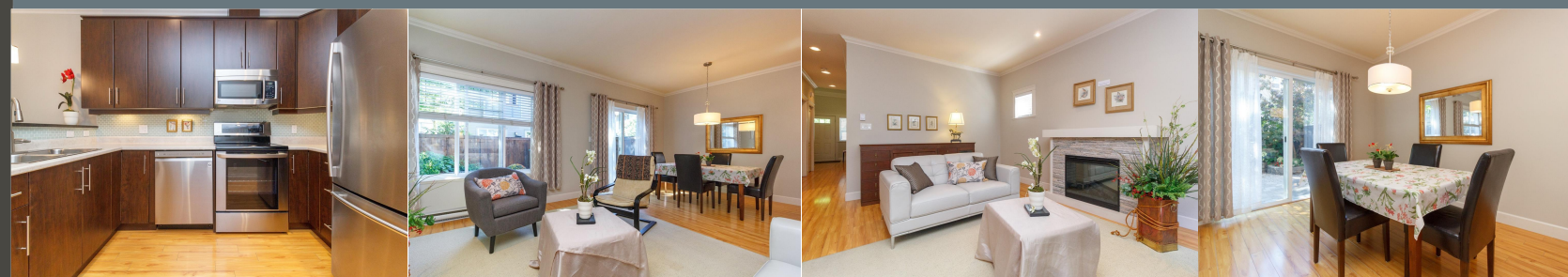
Royal LePage Coast Capital - Chatterton

(250) 360-6106

110 - 4460 Chatterton Way

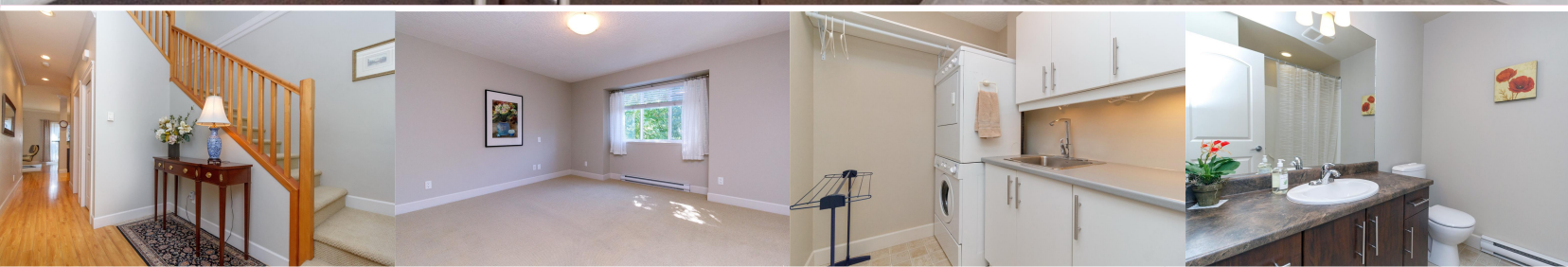
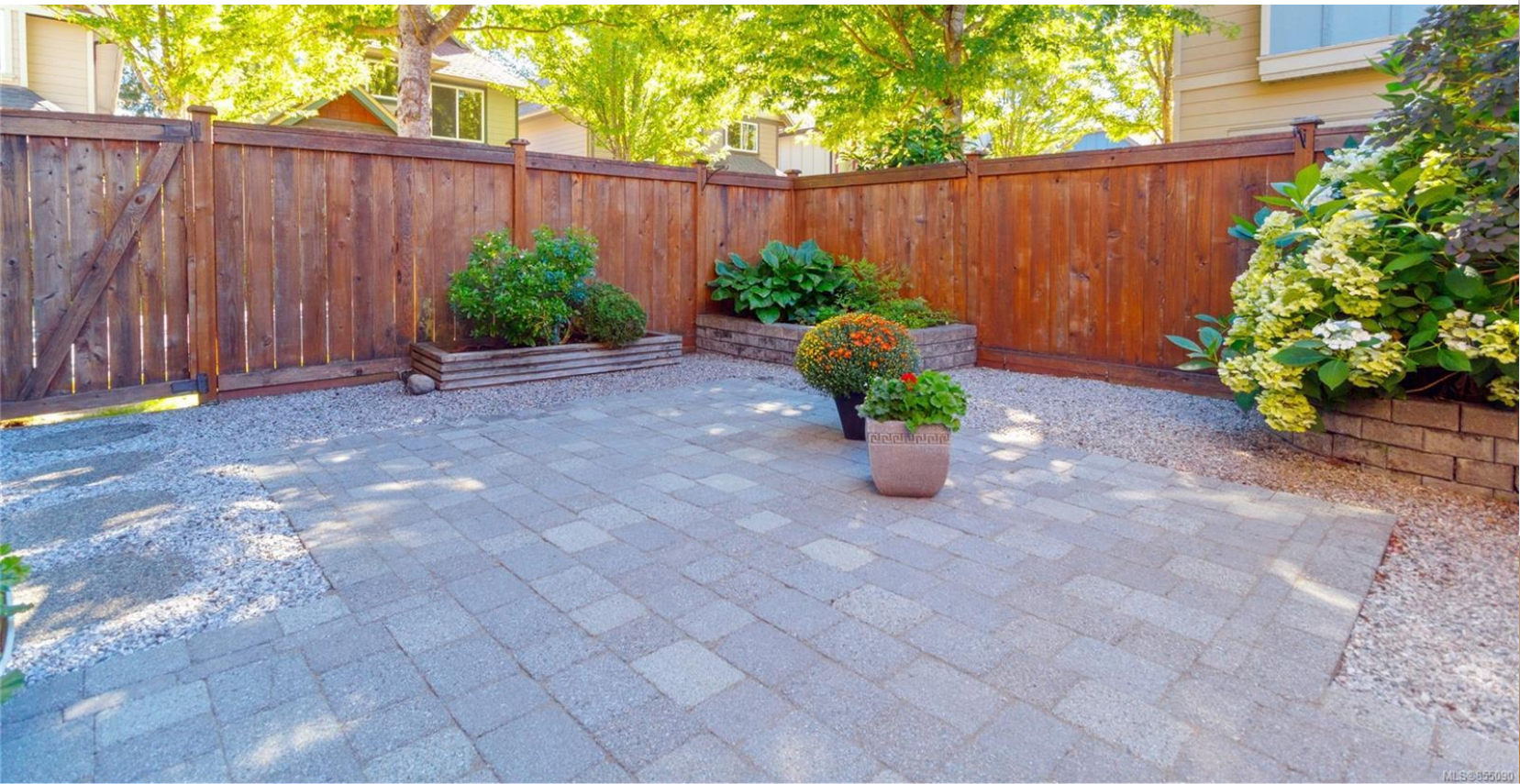
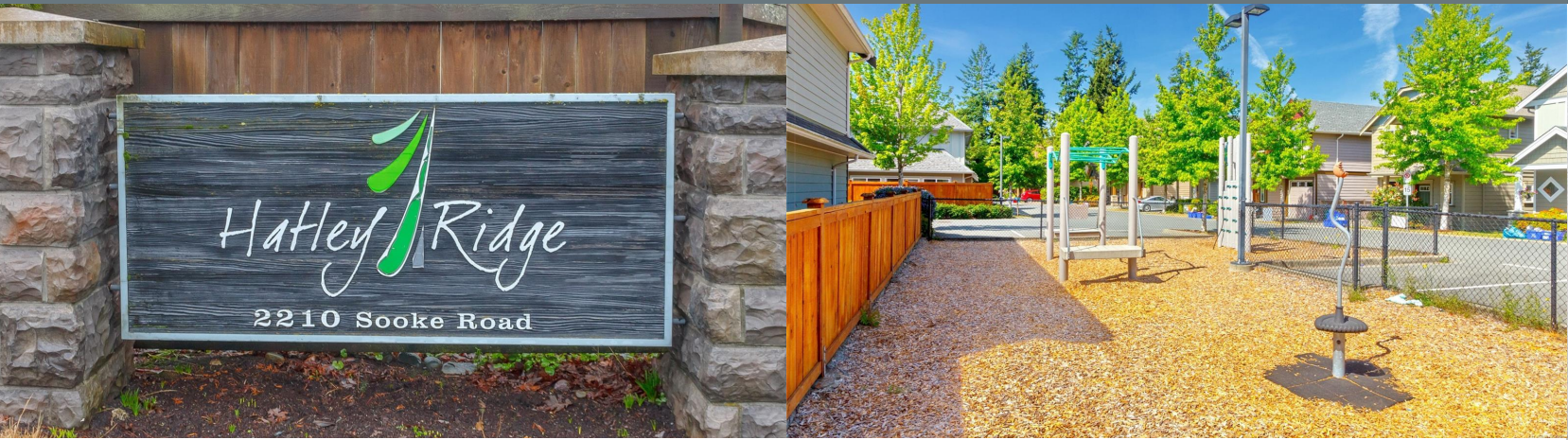
[info@andrewplank.com](mailto:info@andrewplank.com)

<http://www.andrewplank.com>



**Andrew Plank**

Royal LePage Coast Capital - Chatterton



5-2210 Sooke Rd

Well maintained spacious 3bed/3bath townhouse located close to Royal Roads University, trails, parks, beach, Westshore shopping center, all amenities nearby. Over 1500 sq. ft. on 2 levels including open concept 9' ceilings and beautiful fire place living room, with dining area with patio door to fully fenced patio garden backyard. New upgraded kitchen appliances. Brand new countertop and granite breakfast bar. Upstairs includes large master bedroom with heated floor ensuite, brand new countertop with 2 sinks. Large walk in closet. 2 more bedrooms and 4 piece bathroom and a large useful laundry room. Lots of storage. BBQ and pet friendly. Move in condition.

Area	Hatley Park	Age	2007
Bedrooms	3	Taxes	2656
Bathrooms	3	Tax Year	2019
Lot Size	1753	MLS#	855090
Floor Space	1546	Parking	Garage plus 1 space

**Andrew Plank**  
Royal LePage Coast Capital - Chatterton

To view interactive floor plans scan this QR code with your smart phone



(250) 360-6106

110 - 4460 Chatterton Way  
info@andrewplank.com  
<http://www.andrewplank.com>

