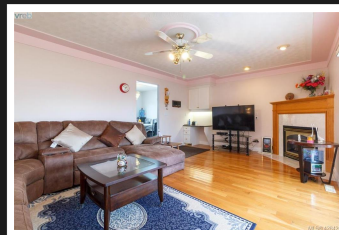


**PEMBERTON  
HOLMES**

· ESTABLISHED 1887 ·

# LARGE GORDON HEAD HOME

## 1851 El Sereno Dr

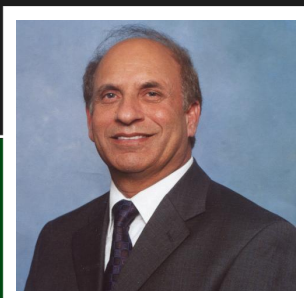


### 1851 El Sereno Dr

Custom made home in excellent condition. Tiled entrance with double doors, glass block side windows, two skylights and a spiral staircase with glass railings. Hardwood floor in living area and a new carpet in the bedrooms. Master bedroom with 5 pce en-suite and a walk in closet. Sunken living room with gas fireplace. Large kitchen with eating area and a family room off kitchen with gas fireplace. Sunken rec room with wet bar and a gas fireplace. Large 2 BR extra accommodation and covered sundeck on the back. Double garage with a workshop. 6' high crawl space over 2000 sqft storage area. Intercom, sprinkler system and list goes on and on... Very convenient location, close to University, bus route and a quite cul-de-sac. call to view today.

**Priced at  
\$1,499,000**

Area	Gordon Head	Age	1992
Bedrooms	5	Taxes	5579
Bathrooms	4	Tax Year	2019
Lot Size	0.19	MLS#	428426
Floor Space	3628	Parking	Garage, drvwy



**GURCHARAN CHAUHAN**

Pemberton Holmes - Cloverdale

Scan this QR  
Code with your  
smart phone



(250) 384-8124  
gchauhan@telus.net  
gurcharanchauhan.com

150 - 805 Cloverdale Ave  
Victoria, V8X 2S9