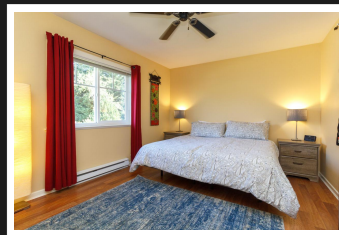
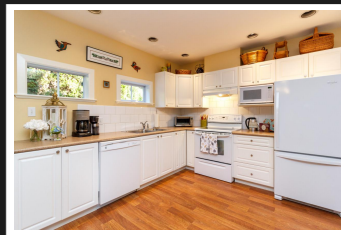
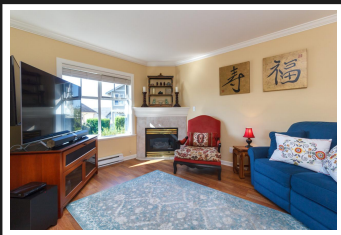


PEMBERTON  
HOLMES

· ESTABLISHED 1887 ·

# TOWNHOUSE IN QUADRA AREA

5-4073 Blackberry Lane



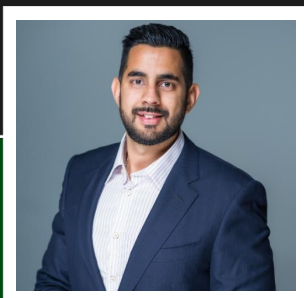
## BEDROOMS 3, BATHROOMS 3

What a great opportunity to own a townhome in a fantastic area of town! The owners took great care of their home, from the beautifully landscaped flower beds to the immaculate condition of the interior. As you enter, the natural gas fireplace welcomes you to an open living space. The large kitchen has plenty of cupboard and counter space and the dining room invites your company for evening meals. Upstairs, you'll find 3 bedrooms, including your master with its own walk-in closet and expansive en-suite with soaker tub and separate stand up shower. Completing the upper level are two more bedrooms, a full bath and expansive views that stretch out to the Olympic mountains (Canada Day Fireworks without the downtown rush!). A full-size garage, central vacuum system and deck for bbq's and lounging make this home complete. A self-run, well-managed strata keep the costs low to provide a stress-free, pet inclusive lifestyle.

**Priced at**  
**\$599,900**

Area	High Quadra
Bedrooms	3
Bathrooms	3
Lot Size	0.04
Floor Space	1449

Age	1997
Taxes	2609
Tax Year	2018
MLS#	399253
Parking	2 Spaces



MANBIR SAMRA

Pemberton Holmes - Cloverdale

Scan this QR  
Code with your  
smart phone



(250) 384-8124  
manbir@samrahomesales.com  
<http://www.samrahomesales.com>

150 - 805 Cloverdale Ave  
Victoria, V8X 2S9