

280 Carnell Dr

\$585,595

OPEN CONCEPT LAYOUT

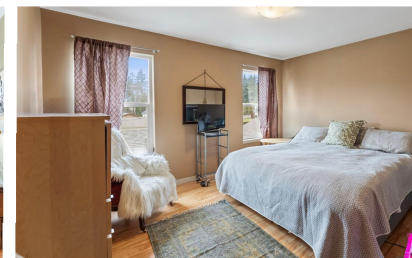
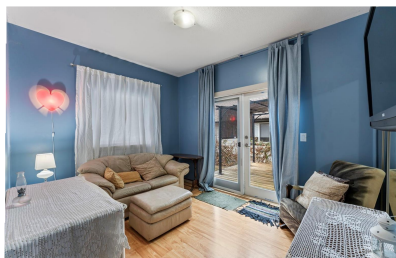


FABULOUS VIEWS

Big family home in a great location, close to town, within a friendly subdivision. This home features four good-sized bedrooms, three bathrooms, and an easily maintained yard. Enjoy a nice, relaxing deck on the lower level. The open concept layout is great for entertaining. The main level is elevated, offering fabulous views, and includes a deck on the upper floor with lots of windows. The lower level has two bedrooms and two bathrooms, while the upper level also boasts two bedrooms and an additional bathroom. There's plenty of storage with the dry crawlspace that offers extra height. A large garage completes this must-see home.

FEATURES

Area	Lake Cowichan
Bedrooms	4
Bathrooms	3
Lot Size	3484.8
Floor Space	1865
Age	2008
Taxes	3674
Tax Year	2022
MLS#	962147



Pat Miller

Owner/Realtor

P. (250) 920.9690
patrick@countrywiderealty.ca
pembertonholmeslakecowichan.com

Po Box 45, 145 South Shore Rd



**PEMBERTON
HOLMES** REAL ESTATE
ESTABLISHED 1887