

PART OF LEEDS, SMOOTHLAND

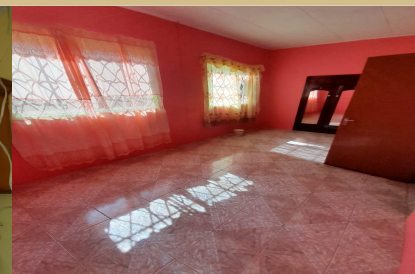
\$14,000,000

PART OF LEEDS, SMOOTHLAND
ST. ELIZABETH



Area	Leeds
Bedrooms	3
Bathrooms	1
Lot Size	0.11
Floor Space	4592
MLS#	73666
Parking	Open

To view interactive floor plans scan this QR code with your smart phone



PART OF LEEDS, SMOOTHLAND

Introducing this 3 bedroom, 1 bathroom house located in the quiet community of Leeds now called Smoothland. This property boasts fruit trees and a spacious low maintenance yard. It could do much better with some fixing up of one's own touch of decor and TLC to give it a more modern flavor and appeal. Give us a call for an appointment to view.

VELMA BINNS
INEZ TURNER REAL ESTATE

P: (876) 625-1350 F: (876) 625-3229

19a Midway Mall, P.o.box 1688
velmabinns2015@gmail.com

