

Nelson Rural



8496 B Procter East Road

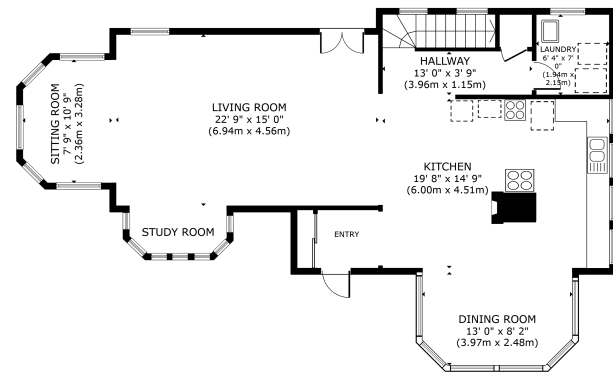
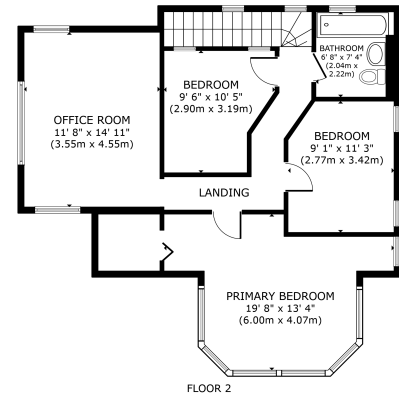


Karen Bennett
Bennett Family Real Estate



Karen Bennett
Bennett Family Real Estate

Unit 1 1014 7th Street
karen@nelsonproperty.com

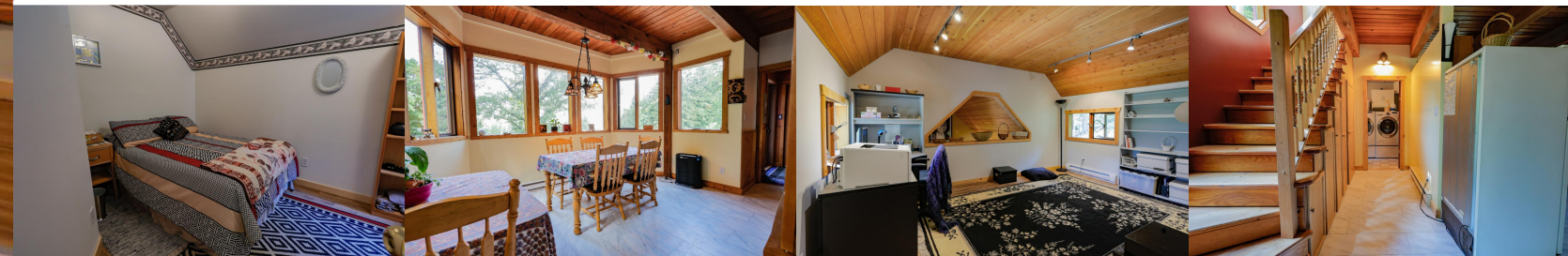


ORIGINAL INTERIOR AREA
FLOOR 1 1,243 SQ. FT. (114.47 SQ. M.) FLOOR 2 752 SQ. FT. (69.74 SQ. M.)
TOTAL 1,995 SQ. FT. (184.21 SQ. M.)
SQ. FT. AND SQ. METERS ARE APPROXIMATE. SEECA, 1991-1992.

Matterport

ORIGINAL INTERIOR AREA
FLOOR 1 1,243 SQ. FT. (114.47 SQ. M.) FLOOR 2 752 SQ. FT. (69.74 SQ. M.)
TOTAL 1,995 SQ. FT. (184.21 SQ. M.)
SQ. FT. AND SQ. METERS ARE APPROXIMATE. SEECA, 1991-1992.

Matterport



Area	Harrop/Procter	Age	1985
Bedrooms	3	Taxes	2194
Bathrooms	2	Tax Year	2023
Lot Size	1.54	MLS#	
Floor Space	1991	Parking	

Timberframe house situated on a 1.5-acre property in the picturesque village of Procter, BC. This exceptional three bedroom, two bathroom home exudes rustic charm and offers a tranquil retreat amidst nature's beauty. Step inside and be captivated by the stunning larch floors that add warmth and character to the living space. The main floor boasts a generously sized living area, perfect for gathering with family or hosting memorable occasions. The eat-in kitchen provides ample space for culinary creations and is a delightful hub for family meals and entertaining guests. As an added bonus, the house features a loft family room, providing a versatile space for relaxation, recreation, or even a home office. Indulge in the serenity of the great outdoors on the large composite deck, where you can immerse yourself in the peaceful ambiance of the surrounding forest. A stunning greenhouse awaits, inviting you to nurture your green thumb and cultivate a vibrant array of plants and flowers. For those with a passion for gardening, the property features a fully fenced 50x100 garden, offering abundant space for growing your own vegetables, fruits, and herbs. Nature enthusiasts will appreciate the enchanting forest and pond found on the property. This three lot bareland strata also includes shared green space for additional outdoor activities. This timberframe house presents an extraordinary opportunity to embrace a harmonious lifestyle surrounded by natural beauty. Don't miss the chance to make this

Karen Bennett
Bennett Family Real Estate

To view interactive floor plans scan this QR code with your smart phone



Unit 1 1014 7th Street
karen@nelsonproperty.com

