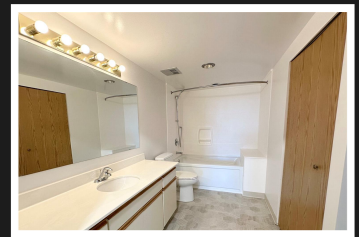
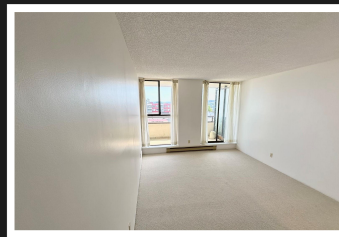


PEMBERTON
HOLMES

· ESTABLISHED 1887 ·

416-9805 SECOND ST



South facing one bedroom condo in a concrete steel reinforced building is move-in ready - new carpet in living/dining area and bedroom, freshly painted and thoroughly cleaned in May. Bathroom has been updated with soaker tub, tub surround and vinyl flooring. Located in the heart of Sidney, you can enjoy a carefree lifestyle in close proximity to all amenities - including unique shops Sidney has to offer. Beacon Park is a short block away where you can enjoy summer concerts in the Amphitheatre, outdoor dining, seaside Promenade to the Marina, Fish Market or enjoy the fishing pier with views of Mt. Baker. Living in the Landmark features guest suites, secured entrance, underground parking, EV common parking, bike storage, scooter parking and lockers. If you are looking for a south facing condo with Ocean views, in unit laundry, ready to move into an in the heart of Sidney, then don't miss out on this opportunity to be the proud owner of this lovely home.



Priced at
\$590,000

Area	Sidney N-East	Age	1983
Bedrooms	1	Taxes	2057
Bathrooms	1	Tax Year	2023
Lot Size	980	MLS#	965669
Floor Space	805	Parking	

INEZ LOUDEN, FRI

Pemberton Holmes - Sidney

Scan this QR
Code with your
smart phone



(250) 656-3486
inezlouden@telus.net
www.inezlouden.com

107-2360 Beacon Ave
Sidney, V8L 1X3