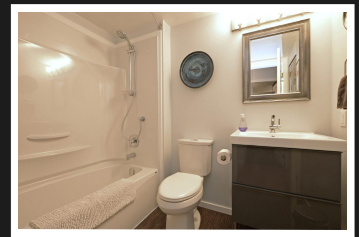
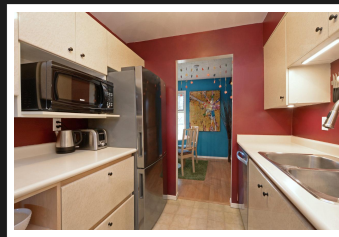
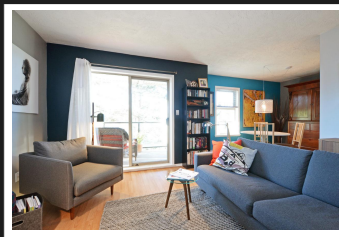
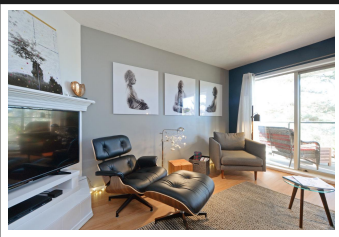


PEMBERTON  
HOLMES

· ESTABLISHED 1887 ·

# OAK BAY JUBILEE AREA

205-2211 Shelbourne St



## BEDROOMS 2, BATHROOMS 2

Superb and central, bordering Oak Bay in the Jubilee area of beautiful Victoria. Walk to the grocery store, coffee shops and many nearby amenities. This tidy 2 bedroom, 2 bathroom condo has a stylish and contemporary feel. With two newly renovated bathrooms complete with MAXX neo-round shower and full tub, new carpets in the bedrooms plus new kitchen appliances, there is nothing to do but move in. Enjoy a sunny, large West-facing balcony with its additional storage cupboard, secure underground parking, as well as large self-contained storage locker in the Remediated "Park Place". This quiet building is 19+ and there are no rentals permitted. One dog up to 30lbs or 2 cats allowed.

**Priced at**  
**\$349,900**

Area	Jubilee
Bedrooms	2
Bathrooms	2
Lot Size	0.02
Floor Space	959

Age	1990
Taxes	1890
Tax Year	2017
MLS#	386147
Parking	1 Space



JENS HENDERSON

Pemberton Holmes - Cloverdale

Scan this QR  
Code with your  
smart phone



(250) 384-8124  
jens\_henderson@hotmail.com  
jenshenderson.com

150 - 805 Cloverdale Ave  
Victoria, V8X 2S9