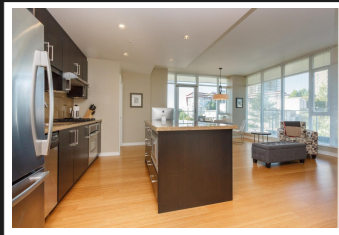
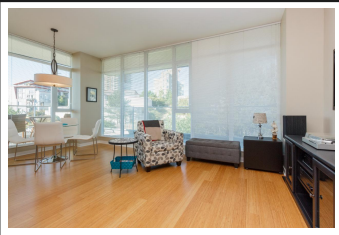


PEMBERTON
HOLMES

· ESTABLISHED 1887 ·

VIC WEST CONDO-CORNER UNIT

301-373 Tye Rd



BEDROOMS 2, BATHROOMS 2

Welcome to the Balance complex, a sought after, award winning building by Dockside Green. This 2 bedroom 2 bathroom corner unit features granite countertops, bamboo flooring, energy star stainless steel appliances, in-suite laundry, beautiful large windows and a wrap around deck. There's parking as well as a storage locker and storage for your bike/kayak. The Balance is an environmentally friendly building surrounded by a wonderful community and it's steps away to the Galloping Goose and Portage Inlet waterway. Pets and rentals are welcomed.

Priced at
\$629,900

Area	Victoria West	Age	2009
Bedrooms	2	Taxes	2972
Bathrooms	2	Tax Year	2018
Lot Size	0.02	MLS#	399206
Floor Space	986	Parking	1 Space



AARON & DARRON HAMBLEY

Pemberton Holmes - Cloverdale

Scan this QR
Code with your
smart phone



(250) 384-8124
adhambley@gmail.com
<http://www.adhambley.com>

150 - 805 Cloverdale Ave
Victoria, V8X 2S9