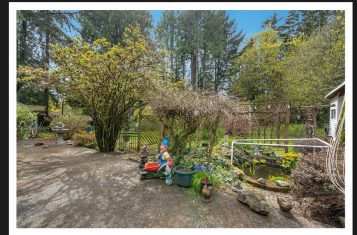
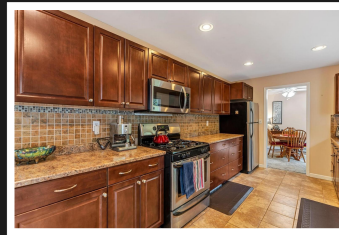


PEMBERTON  
HOLMES

· ESTABLISHED 1887 ·

# COBBLE HILL RANCHER

1035 Cowerd Rd



## 1035 Cowerd Rd

A gardener's paradise. Situated in the desirable Cobble Hill area this beautiful fully fenced level .77-acre property offers plenty of space for gardening, pets, or room for children to roam. The mature landscape includes Fig, Plumb, Pear, Wall Nut, Apple trees as well as Raspberry, Rhubarb and more, not to mention the fishpond. There is plenty of storage available with two garden sheds and a separate 12'x16' workshop for the handyperson of the family. The no step 1,804 sq ft rancher has been lovingly maintained and updated in areas including the kitchen and bath. The spacious family room with its cozy gas fireplace is the perfect spot to unwind after a long day. There's plenty of counter and cupboard space in the large bright kitchen. Location could not be better with loads of recreational opportunities close by as well as great schools, shopping, marinas, golf courses and more.



**Priced at**  
**\$925,000**

Area	Cobble Hill	Age	1974
Bedrooms	3	Taxes	2876
Bathrooms	1	Tax Year	2021
Lot Size	33541.2	MLS#	901461
Floor Space	1804	Parking	

**JASON FINLAYSON**

Pemberton Holmes - Duncan

Scan this QR  
Code with your  
smart phone



(250) 746-8123  
jowichanrealtor@gmail.com  
www.jasonfinlayson.com

23 Queens Road  
Duncan, V9L 2W1