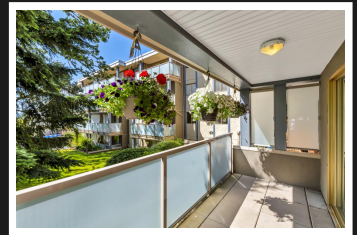
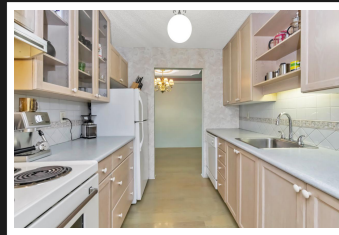
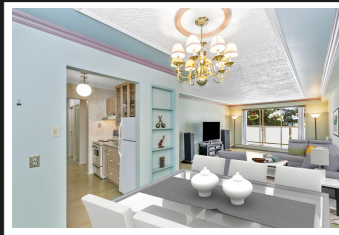


PEMBERTON
HOLMES

· ESTABLISHED 1887 ·

LOVELY QUADRA CONDO

204-1025 Inverness Rd



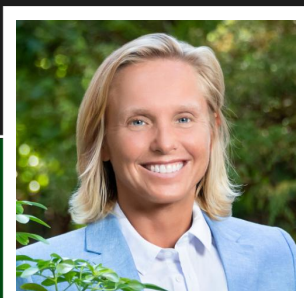
204-1025 Inverness Rd

Great value! Welcome home to your very own 2 bedroom, 2 bathroom Condo on the quiet side of building, centrally located near Uptown & Mayfair mall and across the street from Rutledge park. This is a good size condo with spacious living room & large bedrooms plus lots of storage as well as storage locker & parking. Lovely kitchen with dishwasher, laminate flooring & nice bonus: the master has an ensuite bathroom. Outside space is private, west facing yet slightly sheltered by trees. Enjoy the building amenities include resident Caretaker, gym, sauna, billiards room, workshop, event room & your strata fee includes heat & hot water. Exciting opportunity! Virtual staging in photos, 3D Virtual Tour & Floor plan available. Call to book a private tour today or visit the OPEN HOUSE Saturday July 25 from 2-4pm.

Priced at
\$349,800

Area	Quadra
Bedrooms	2
Bathrooms	2
Lot Size	0.02
Floor Space	981

Age	1974
Taxes	1352
Tax Year	2019
MLS#	430018
Parking	1 Space



DIANA WINGER

Pemberton Holmes - Cloverdale

Scan this QR
Code with your
smart phone



(250) 384-8124
SOLD@HomeVictoria.com
<http://www.HomeVictoria.com>

150 - 805 Cloverdale Ave
Victoria, V8X 2S9