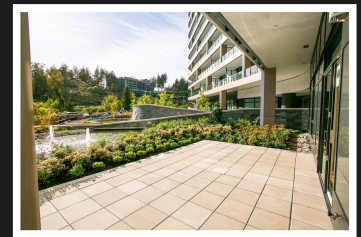
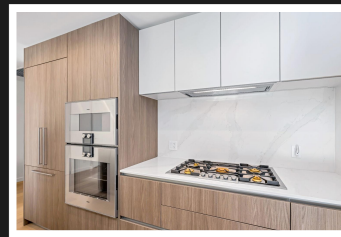
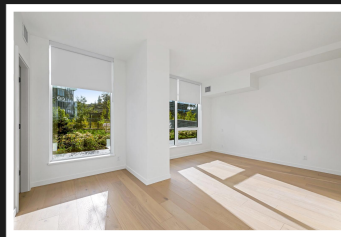
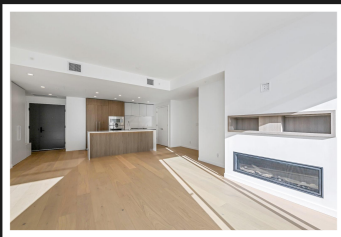


PEMBERTON
HOLMES

· ESTABLISHED 1887 ·

BEAR MOUNTAIN PENTHOUSE

605-2000 Hannington Rd



605-2000 Hannington Rd

Welcome to One Bear Mountain, a premier condominium complex in Langford, steps from the 18th hole of the Bear Mountain golf course. This stunning Garden Terrace Penthouse combines modern luxury with European elegance. The sleek kitchen features high-end stainless-steel appliances, quartz countertops, and Italian cabinetry. The living and dining area includes a cozy gas fireplace and opens to a spacious patio overlooking manicured gardens and a tranquil water feature. The primary suite offers a spa-like 5-piece ensuite and a walk-in closet. The second bedroom has its own 4-piece ensuite and walk-in closet. A versatile bonus room serves as a perfect home office or den. The complex offers top-tier amenities such as a swimming pool, fitness center, bike storage, dog wash station, indoor parking, and lounge areas with stunning views. This is luxury living at its finest, surrounded by natural beauty.



Priced at
\$1,729,000

Area	Bear Mountain	Age	2024
Bedrooms	2	Taxes	0
Bathrooms	3	Tax Year	2024
Lot Size		MLS#	977014
Floor Space	1705	Parking	

PAUL TEDRICK

Pemberton Holmes - Duncan

Scan this QR
Code with your
smart phone



(250) 216-6020
paul@paultedrick.ca
www.paultedrick.ca

23 Queens Road
Duncan, V9L 2W1