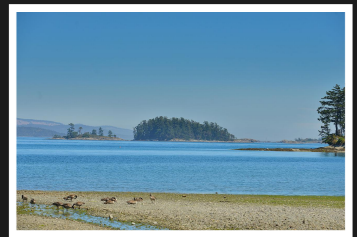
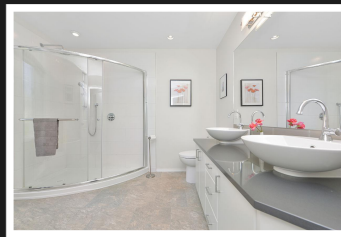
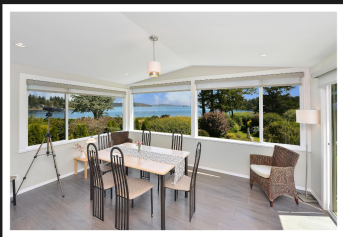


PEMBERTON
HOLMES

· ESTABLISHED 1887 ·

SIDNEY WATERFRONT OASIS

10255 Resthaven Dr



Completely Updated 4 Bedroom, 3 Bathroom Home on over 1/2 Acre

A PRIVATE WATERFRONT OASIS on more than 1/2 an acre awaits discovery. Facing Roberts Bay & Mermaid Creek, surrounded by lush gardens with a pond, this completely renovated home (2014) boasts a spectacular kitchen with quartz counters, tile backsplash, laminate floors & wall-to-wall windows revealing a STUNNING OCEAN VIEW. The main bedroom has a walk-in closet & ensuite with quartz counter, double sinks, walk-in shower & luxurious soaker tub. Also new are 2 full bathrooms, gas furnace, windows, lighting, wool carpet throughout, & a main-level layout that's perfect for teens, a home office, or guests. You will want to spend the summer on the sun-soaked deck with glass railings, while enjoying the OCEAN BREEZE, STUNNING VIEW & GARDEN. The beach is easily accessible & an ideal launch for kayaks, swimming, or walks. Set well back from the road, this home even offers space for RVs (zoned R2). It's rare to find this kind of property size & privacy in the heart of Sidney, close to everything!



Priced at
\$2,500,000

Area	Sidney NE	Age	1975
Bedrooms	4	Taxes	\$7565
Bathrooms	3	Tax Year	2022
Lot Size	22,464sf	MLS#	913205
Floor Space	2615sf	Parking	Dbl Garage

NICOLE BURGESS

Pemberton Holmes - Cloverdale

Scan this QR
Code with your
smart phone



(250) 384-8124
nicole@nicoleburgess.com

150-805 Cloverdale Ave
Victoria, V8X 2S9