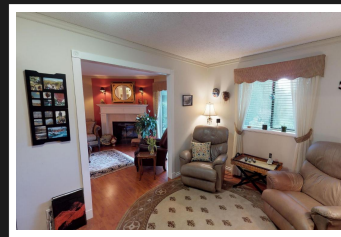
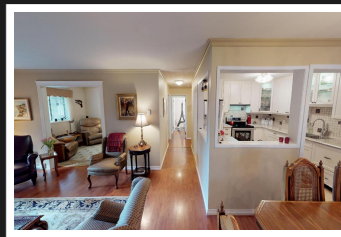
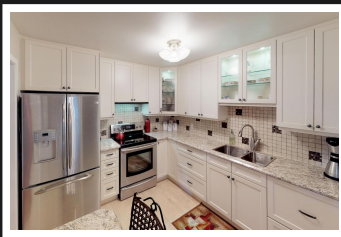


PEMBERTON  
HOLMES

· ESTABLISHED 1887 ·

# GORGE WATERFRONT CONDO

101-79 Gorge Rd



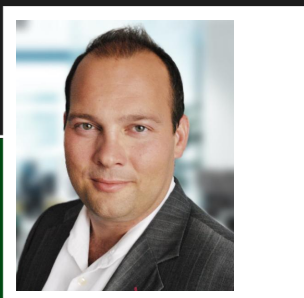
101-79 Gorge Rd

South-facing, WATERFRONT, corner unit located right on the Gorge Waterway. You will love starting your day on your huge private patio where you will enjoy a bird watchers paradise and a morning mist on the waterway. All main living areas are designed to take in the water views. Finishing touches are sprinkled throughout, like the built-in breakfast bar, the in-cabinet lighting and the double dishwasher. You'll fall in love with the floor plan and the spacious rooms, not to mention the warmth and ambiance that only a wood burning fireplace can bring.

**Priced at  
MLS Listed**

Area	Gorge
Bedrooms	2 or 3
Bathrooms	2
Lot Size	0.03
Floor Space	1276

Age	1980
Taxes	1839
Tax Year	2018
MLS#	405173
Parking	1 Space



**JEFF MARTENS\***

Pemberton Holmes - Cloverdale

\*Personal Real Estate Corporation

Scan this QR  
Code with your  
smart phone



Mobile: (250) 812-6492  
jeff@jeffmartens.ca  
www.jeffmartens.ca

150 - 805 Cloverdale Ave  
Victoria, V8X 2S9

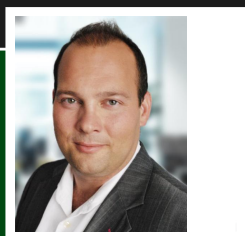




## Cedar Shores Community

Much more than just a condo, you are buying into a community that offers many great amenities to enhance your lifestyle. At Cedar Shores you'll enjoy the following amenities:

- \*Tennis and Racquet Court
- \*Pool
- \*Hot Tub
- \*Sauna
- \*Social Room
- \*Waterfront Barbecue Area



**JEFF MARTENS\***

Pemberton Holmes - Cloverdale

\*Personal Real Estate Corporation

Office: (250) 384-8124

[jeff@jeffmartens.ca](mailto:jeff@jeffmartens.ca)

[www.jeffmartens.ca](http://www.jeffmartens.ca)

150 - 805 Cloverdale Ave

Victoria, V8X 2S9