

# Peaceful Escape

Nelson

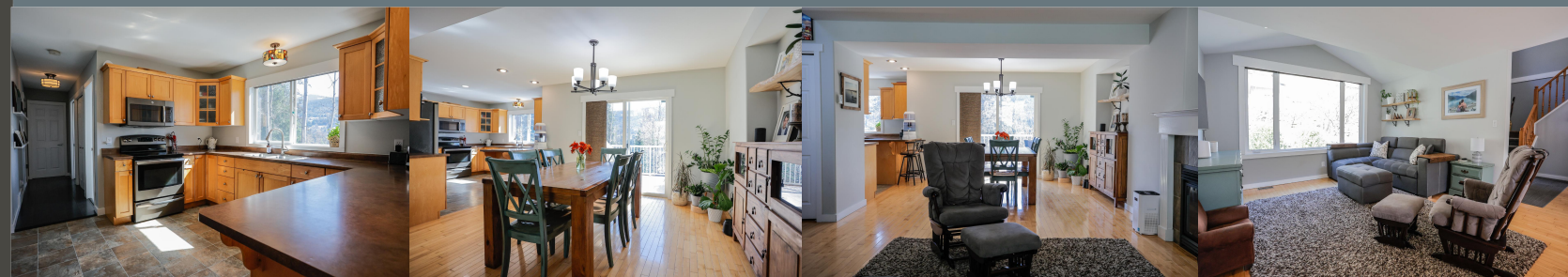


5820 WOODLAND DR

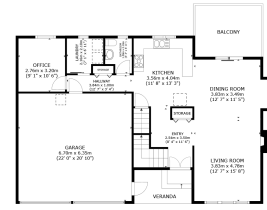


Karen Bennett  
Bennett Family Real Estate

[karen@nelsonproperty.com](mailto:karen@nelsonproperty.com)

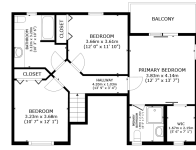


Karen Bennett  
Bennett Family Real Estate



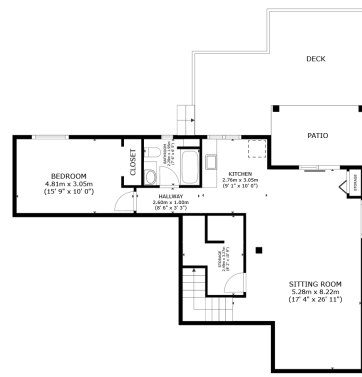
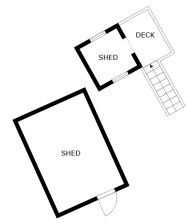
FLOOR 2

GROSS INTERNAL AREA  
 FLOOR 1 77.9 m<sup>2</sup> (838 sq.ft.) FLOOR 2 83.8 m<sup>2</sup> (902 sq.ft.) FLOOR 3 68.3 m<sup>2</sup> (735 sq.ft.)  
 EXCLUDED AREAS: DECK 25.1 m<sup>2</sup> (270 sq.ft.) PATIO 9.5 m<sup>2</sup> (102 sq.ft.) SHED 12.1 m<sup>2</sup> (131 sq.ft.)  
 VERANDA 6.7 m<sup>2</sup> (73 sq.ft.) BALCONY 11.9 m<sup>2</sup> (128 sq.ft.) GARAGE 42.5 m<sup>2</sup> (458 sq.ft.)  
 TOTAL: 230.0 m<sup>2</sup> (2,476 sq.ft.)  
SIZES AND DIMENSIONS ARE APPROXIMATE, ACTUAL MAY VARY.



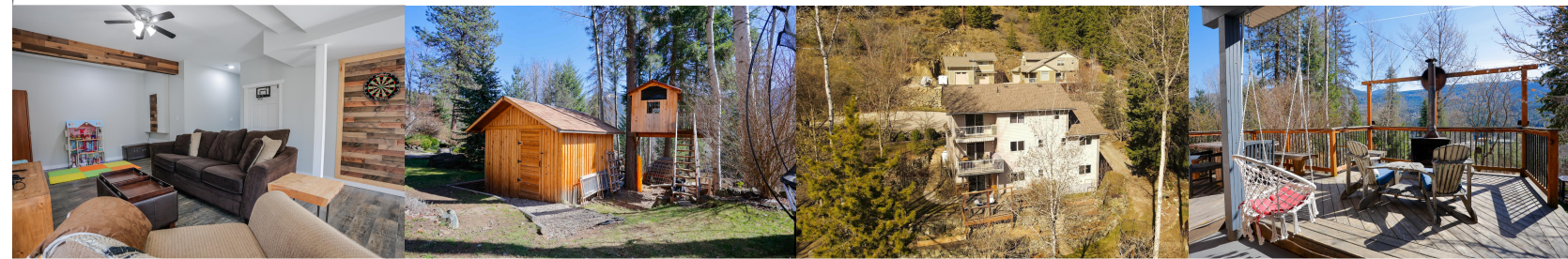
FLOOR 3

GROSS INTERNAL AREA  
 FLOOR 1 77.9 m<sup>2</sup> (838 sq.ft.) FLOOR 2 83.8 m<sup>2</sup> (902 sq.ft.) FLOOR 3 68.3 m<sup>2</sup> (735 sq.ft.)  
 EXCLUDED AREAS: DECK 25.1 m<sup>2</sup> (270 sq.ft.) PATIO 9.5 m<sup>2</sup> (102 sq.ft.) SHED 12.1 m<sup>2</sup> (131 sq.ft.)  
 VERANDA 6.7 m<sup>2</sup> (73 sq.ft.) BALCONY 11.9 m<sup>2</sup> (128 sq.ft.) GARAGE 42.5 m<sup>2</sup> (458 sq.ft.)  
 TOTAL: 230.0 m<sup>2</sup> (2,476 sq.ft.)  
SIZES AND DIMENSIONS ARE APPROXIMATE, ACTUAL MAY VARY.



FLOOR 1

GROSS INTERNAL AREA  
 FLOOR 1 77.9 m<sup>2</sup> (838 sq.ft.) FLOOR 2 83.8 m<sup>2</sup> (902 sq.ft.) FLOOR 3 68.3 m<sup>2</sup> (735 sq.ft.)  
 EXCLUDED AREAS: DECK 25.1 m<sup>2</sup> (270 sq.ft.) PATIO 9.5 m<sup>2</sup> (102 sq.ft.) SHED 12.1 m<sup>2</sup> (131 sq.ft.)  
 VERANDA 6.7 m<sup>2</sup> (73 sq.ft.) BALCONY 11.9 m<sup>2</sup> (128 sq.ft.) GARAGE 42.5 m<sup>2</sup> (458 sq.ft.)  
 TOTAL: 230.0 m<sup>2</sup> (2,476 sq.ft.)  
SIZES AND DIMENSIONS ARE APPROXIMATE, ACTUAL MAY VARY.



5820 WOODLAND DR

Located in Taghum near Nelson, B.C., this spacious 4-bedroom family home offers a serene retreat on a quiet cul-de-sac. The well-maintained yard features space for play and gardening, including raised beds, berry bushes, and fruit trees. Inside, the layout spans three floors, with a cozy main level boasting updates throughout, including a kitchen, living, and dining areas, alongside a convenient office/den. Upstairs, three bedrooms await, including a master suite with a balcony and a renovated ensuite. The walkout basement offers additional space with a kitchen, full bath, bedroom, and family room. Don't miss out—schedule a viewing today and see the potential for yourself.

Area  
 Bedrooms  
 Bathrooms  
 Lot Size 0.27  
 Floor Space

Age  
 Taxes 4186.57  
 Tax Year 2023  
 MLS#  
 Parking

Karen Bennett  
 Bennett Family Real Estate

To view interactive floor plans scan this QR code with your smart phone



karen@nelsonproperty.com

