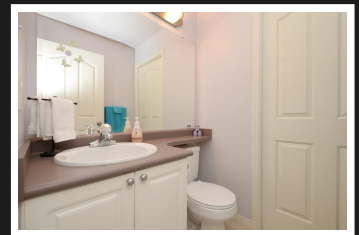
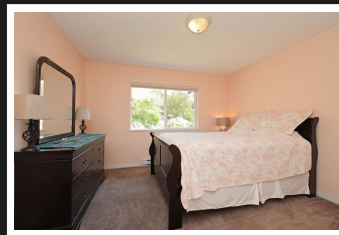
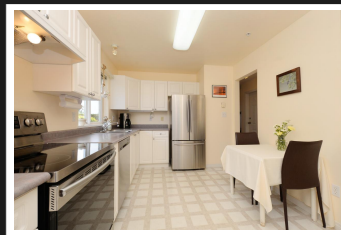
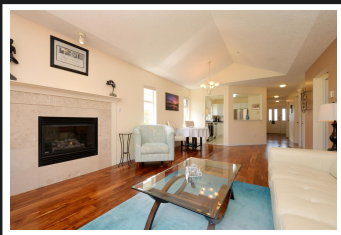


PEMBERTON
HOLMES

· ESTABLISHED 1887 ·

LOVELY SERENE ONE LEVEL HOME

11-126 Hallowell Rd



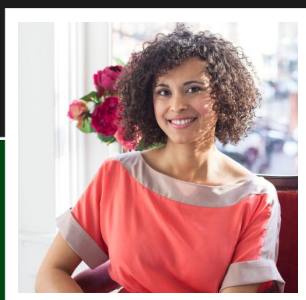
BEDROOMS 2, BATHROOMS 2

Serene ONE level living in a complex set amidst gardens & rockery. This bright END UNIT has level access from the main entry. Soak in the rays from the sunny South-West exposure & VAULTED CEILINGS with extra windows. Gas fireplace tastefully update with marble tile, new acacia wood flooring & fresh paint. Large master suite with walk thru closets leading to the cheater ensuite. Airy & open the living room flows onto a darling private patio perfect for indoor-outdoor living. Admirals walk amenities, shopping, coffee shops, Regional Trails, Gorge park & waterfront access are at your doorstep. All ages. 2 cats or 2 dogs or 1 of each ok, no size or weight limits. The Gardens at Aldersmith boast a healthy reserve fund & well maintained properties. Surrounded by neighbours with a strong sense of community this is a safe place to live with the freedom to travel. Just lock the door & go knowing things are being looked after. Click the media icon for 3D tour & floorplans.

Priced at
\$460,000

Area	Glentana
Bedrooms	2
Bathrooms	2
Lot Size	0.03
Floor Space	1138

Age	2000
Taxes	2083
Tax Year	2018
MLS#	395656
Parking	2 Spaces



PATRICIA KITEKE

Pemberton Holmes - Cloverdale

Scan this QR
Code with your
smart phone



(250) 384-8124
info@kiteke.ca
<http://kiteke.ca>

150 - 805 Cloverdale Ave
Victoria, V8X 2S9