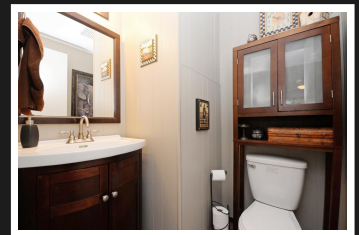
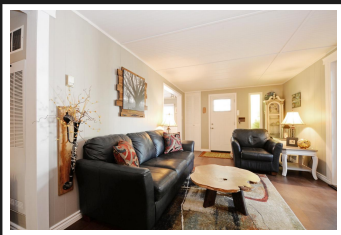


PEMBERTON
HOLMES

· ESTABLISHED 1887 ·

A PLACE TO CALL HOME

10-4544 Lanes Rd



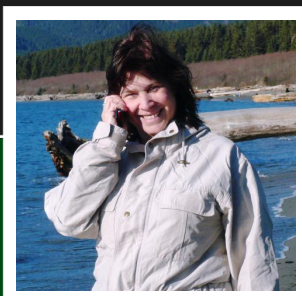
3 BEDROOMS, 2 BATHROOMS

A Artist Retreat. Stunning makeover with the ocean and mountains as a backdrop. Property is private with sunshine streaming in from all sides! Open living spaces flow around a featured woodstove hearth with wood crafted Living Edge mantle. Brand new glass topped range compliments the granite accents and white cabinetry in kitchen. French doors lead to the sunroom with easy access to outdoor pleasures; including your own attached large workshop with power! Crisp and Clean fully updated home surrounded by landscaped gardens with patio. Lots of extra storage in crawl space with two easy accesses. Plus brand new shed. Quieter lifestyle at this 55+ Edgewater Terrace MHP in desirable Cowichan Bay. This decorator's dream 3 bedroom home is tucked away on a corner pad a good distance from the main road. Only 19 residences share this wonderful place. Relax and experience the wildlife. This well maintained park is zoned MP-1, and new tenants must be approved by management. Pad fees are \$425/mth.

Priced at
\$165,000

Area	Cowichan
Bedrooms	3
Bathrooms	2
Lot Size	
Floor Space	1086

Age	1971
Taxes	666
Tax Year	2017
MLS#	383762
Parking	2 Spaces



NANCY VIEIRA, PREC
Pemberton Holmes - Sooke

Scan this QR
Code with your
smart phone



(250) 642-3240
info@nancyvieira.com
<http://www.nancyvieira.com>

2 - 6716 West Coast Rd
Sooke, V9Z 0P7