

107-8408 JUBILEE ROAD E

\$324,900

107-8408 JUBILEE ROAD E
SUMMERLAND



Area	Main Town
Bedrooms	2
Bathrooms	2
Lot Size	
Floor Space	1215 sf
Age	1995
Taxes	\$1878
Tax Year	2017
MLS#	174645
Parking	1 Space, Underground Garage, RV Parking



To view online scan this
QR code with your smart
phone



107-8408 JUBILEE ROAD E

Sought-after Silver Birch! South exposure, this spacious 2 bed, 2 bath corner unit has been meticulously cared for. Fresh paint & fantastic floor plan. Forget lobbies & long hallways! Walk right in through your covered deck. Large master, walk-through closet, 3 pc ensuite at one end, guest room, 4 pc bath at the other; main living space in the middle. Perfect! Lovely living room, gas fireplace, dining room, kitchen has built-in breakfast nook, new countertops, backsplash, newer flooring & appliances & pull-out pantry drawers, laundry room, deck over-looking the courtyard & storage just down the hall.

SHANNON VANDERMEY
ROYAL LEPAGE PARKSIDE REALTY

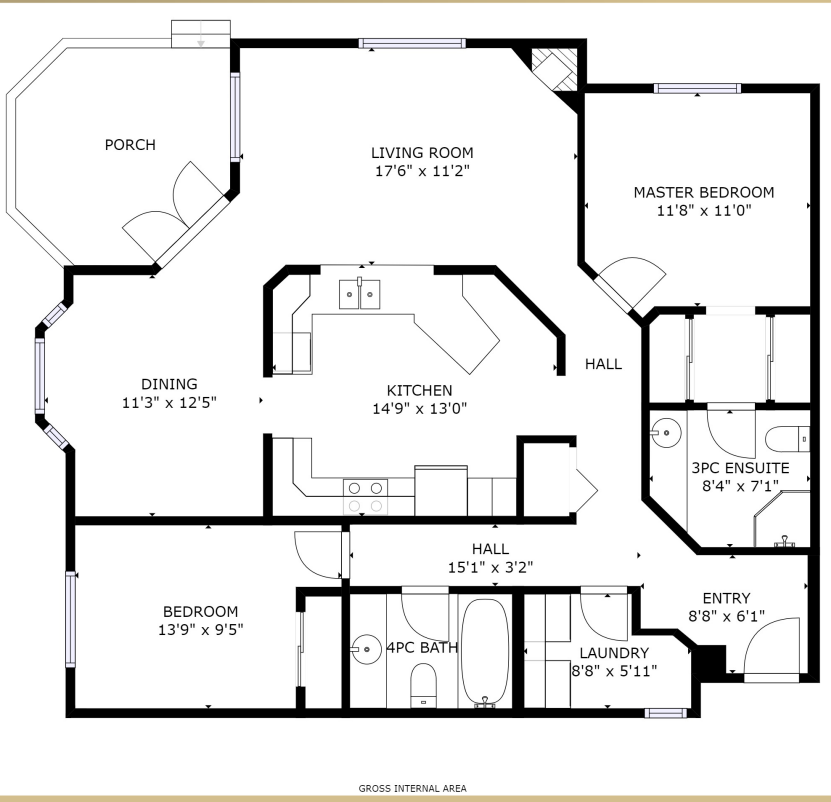
(250) 494-0505

Po Box 930; 9925 Main St
shannoncrealty@telus.net
www.homesintheokanagan.com



107-8408 JUBILEE ROAD E

\$324,900



107-8408 JUBILEE ROAD E

Silver Birch is THE premier complex in Summerland. Beautiful grounds, RV parking, secure underground parking, clubhouse, outdoor swimming pool, workshop, walk to downtown. New roof & lighting in common areas; well-run strata, 55+, small pet with approval, no rentals & hot water on demand included. You'll LOVE living here!

Click on Multi-media 360* Video Tour! <https://my.matterport.com/show/?m=3BhFRMGp5YF>

All measurements approx.

SHANNON VANDERMEY
ROYAL LEPAGE PARKSIDE REALTY

(250) 494-0505

Po Box 930, 9925 Main St
shannoncrealty@telus.net
www.homesintheokanagan.com

