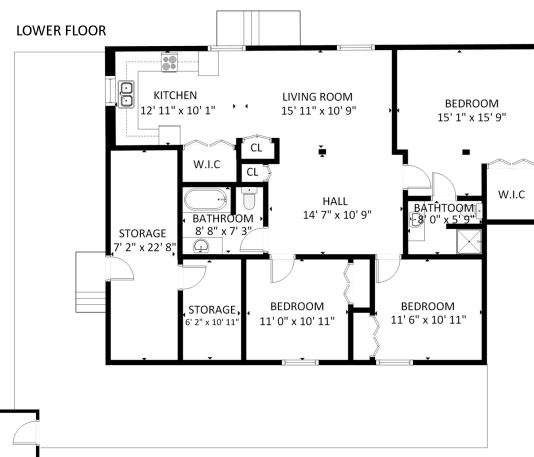


3438 WHITTIER AVE						
FLOOR	FINISHED	UNFINISHED	PORCH	DECK	SHED	TOTAL
LOWER	1328	242	0	364	171	2105
MAIN	1535	0	25	364	0	1924
<b>TOTAL</b>	<b>2863</b>	<b>242</b>	<b>25</b>	<b>728</b>	<b>171</b>	<b>4029</b>

SIZES AND DIMENSIONS ARE APPROXIMATE. ACTUAL MAY VARY.  
FLOOR PLAN PREPARED FOR EXCLUSIVE USE OF

Rachel (Rahat) Doost



3438 WHITTIER AVE						
FLOOR	FINISHED	UNFINISHED	PORCH	DECK	SHED	TOTAL
LOWER	1328	242	0	364	171	2105
MAIN	1535	0	25	364	0	1924
<b>TOTAL</b>	<b>2863</b>	<b>242</b>	<b>25</b>	<b>728</b>	<b>171</b>	<b>4029</b>

SIZES AND DIMENSIONS ARE APPROXIMATE. ACTUAL MAY VARY.  
FLOOR PLAN PREPARED FOR EXCLUSIVE USE OF

Rachel (Rahat) Doost



## RACHEL (RAHAT) DOOST

Pemberton Holmes - Cloverdale

(250) 508 - 0171    (250) 380 - 6355

150 - 805 Cloverdale Ave  
Victoria BC V8X 2S9

rachel.doost.ph@gmail.com  
[www.DoostRealEstate.com](http://www.DoostRealEstate.com)

## 3438 Whittier Ave



## RACHEL (RAHAT) DOOST

Pemberton Holmes - Cloverdale

Priced at \$829,800



### 3438 Whittier Ave

This well maintained and solid built house features on the main level 3 generously sized bedrooms and 2 updated 4 piece bathrooms, a nice kitchen and living room with wood burning fireplace. The lower level offers a open concept 3 bedroom 2 bathroom fully self contained suite with own electrical and hot water tank, 8" of insulation with Rbar that separates noise between levels. You will enjoy the Southwest facing backyard with fruit trees and storage shed. Conveniently this house offers two driveways, one for the suite and one for the main house. Lots of parking for your RV, boat, cars etc.

Location, location, location! This home is in walking distance to Uptown, Mayfair and Tillicum Malls, parks, trails, schools, grocery, doctors, pharmacy, restaurants, highway and much more.

### 3438 Whittier Ave

Area	Rudd Park	Age	1930
Bedrooms	6	Taxes	2980
Bathrooms	4	Tax Year	2019
Lot Size	0.16	MLS#	407307
Floor Space	2830	Parking	2 Spaces, Driveway



**RACHEL (RAHAT) DOOST**  
Pemberton Holmes - Cloverdale



Scan this QR Code with your smart phone

250 508 0171  
rachel.doost.ph@gmail.com  
www.DoostRealEstate.com

150 - 805 Cloverdale Ave  
Victoria BC V8X 2S9