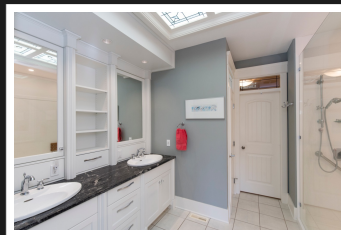


PEMBERTON
HOLMES

· ESTABLISHED 1887 ·

EXECUTIVE RANCHER

2577 Kinnoull Crescent ~ Mill Springs Village



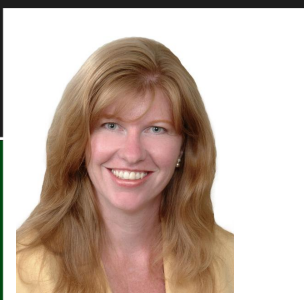
2577 Kinnoull Crescent

For the discriminating buyer. When custom design & high end finishing is important, view this exquisite home. A true no-step rancher boasting amazing interior finishings: tray ceilings, crown mouldings, transom windows, Brazilian cherry wood floors, granite counters, modern lighting & fixtures, high end appliances, redesigned Ensuite with heated tile floor & wheelchair accessible shower. Professionally designed/landscaped back yard, fully fenced with approx 100 trees for unexpected privacy. Stamped concrete patio, covered patio, stonework raised garden, inground sprinklers, water spigot at raised garden, water fountain, landscape lighting, exterior speakers, natural gas bbq. Interactive floorplan & 3D tour available! www.webberhomesvancouverisland.ca

Priced at
\$799,000

Area	Mill Bay
Bedrooms	2
Bathrooms	2
Lot Size	0.24
Floor Space	1791

Built	2006
Taxes	\$3,904
Tax Year	2018
MLS#	452517
Garage	Double



SHAE WEBBER

No Hype - No Pressure - Just Great Service

Scan this QR
Code with your
smart phone



250-709-8888
shae@webbers.ca
<http://www.webbers.ca>

23 Queens Road
Duncan, V9L 2W1

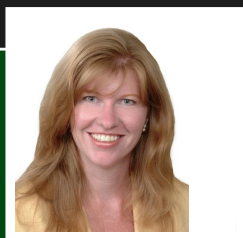


Custom Designed and Crafted by Mini Mansions

A sampling of the many high quality and interesting features about this home and property:

- Imported Italian gas range plus NEW high-end stainless steel appliances
- All new Brazilian hardwood flooring throughout the home + both baths with NEW heated tile floors
- Amazing Ensuite with custom built wheelchair accessible shower
- Professionally designed landscape features plus garden shed, garden fountain, stamped concrete patio
- NEWER granite counters and quality fixtures in the kitchen and both baths
- NEW two-step water filter and softener system
- Organic practices both in the home and in the front & back yards

Viewing appointments are required for qualified buyers.



SHAE WEBBER

Pemberton Holmes - Duncan

(250) 746-8123
shae@webbers.ca
<http://www.webbers.ca>

23 Queens Road
Duncan, V9L 2W1