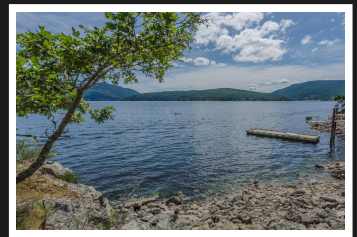
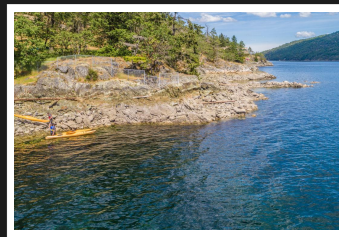
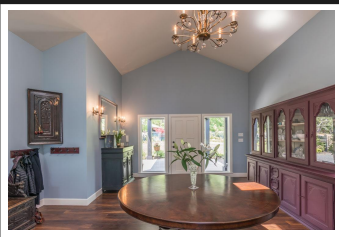


PEMBERTON
HOLMES

· ESTABLISHED 1887 ·

WALK ON WATERFRONT ACERAGE

344 Arbutus Ave

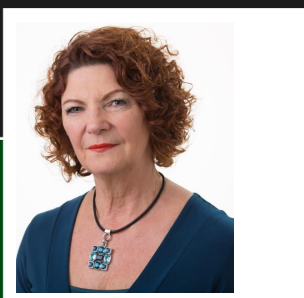


344 Arbutus Ave

MAPLE BAY walk on waterfront- 350 ft! Gated entrance and circular driveway on private 1.7 acres. Impressive, bespoke renovations by Clarafication Designs. Grand entrance hall to living area with vaulted ceilings, floor to ceiling windows and unobstructed ocean & mountain views. Open plan design has Verti and Feng Shui influences - German engineered flooring and unique lighting. Thoughtfully designed gourmet kitchen features Aga electric stove, marble counter tops and oak cabinets. Stunning ocean views from master bedroom & spa ensuite. Spacious bedrooms have built-in units. Lower floor features 5th bedroom with access to outside. Large entertainment room with access to patio to dine al fresco. Legal one bedroom suite with ocean view and patio. W1 zoning. Formal gardens at front; irrigation system and natural ocean landscape. Kayak, swim, fish or hike from your door. Village has marinas, pubs, float planes, rowing club & yacht club

Priced at
\$2,690,000

Area	East Duncan	Age	1990
Bedrooms	6	Taxes	11140
Bathrooms	5	Tax Year	2019
Lot Size	74488	MLS#	860642
Floor Space	5031	Parking	Multi car,



SANDRA CARSWELL

Pemberton Holmes - Duncan

Scan this QR
Code with your
smart phone



(250) 746-8123
sandra@sandracarswell.ca

23 Queens Road
Duncan, V9L 2W1