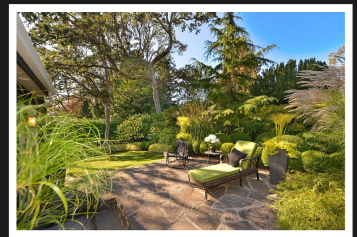
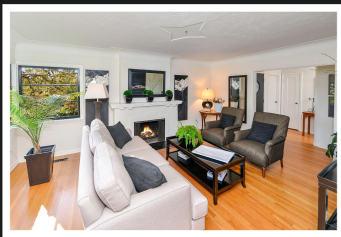


PEMBERTON
HOLMES

· ESTABLISHED 1887 ·

GORGEOUS UPDATED HOME

1234 Palmer Rd., Maplewood



4 Bdrs, 2 Bths, New Addition, PLUS Unfinished Basement

On a quiet no-thru street in the heart of Maplewood, a block from Playfair Park, sits a gorgeous architecturally unique home with loads of charm! This home has been substantially updated but retains the original high-end features incl. corner windows in almost every room, coved ceilings, art deco feature walls, gleaming oak & fir floors. The kitchen & main bathroom have been completely updated with quartz counters, cabinets, sinks, & faucets. BONUS: there's a NEW 2012 ADDITION with a family room, master bedroom, walk-thru closet, and luxurious ensuite. The ensuite features a quartz counter, double sinks, heated floor, and beautifully tiled walls, backsplash and walk-in shower. The family room boasts a gas fireplace, built-in cabinets, and French doors that open to a private patio surrounded by lush gardens. An unfinished, walk-out basement with a good ceiling height of 7'4" has tons of potential! A new 2020 roof and a new 2015 gas furnace make this home move-in ready.



Priced at
\$1,249,000

Area	SE Maplewood	Age	1946
Bedrooms	4	Taxes	\$4248
Bathrooms	2	Tax Year	2022
Lot Size	8095 sf	MLS#	919235
Floor Space	1980 sf	Unfinished	845 sf

NICOLE BURGESS

Pemberton Holmes - Cloverdale

Scan this QR
Code with your
smart phone



(250) 384-8124
nicole@nicoleburgess.com

150-805 Cloverdale Ave
Victoria, V8X 2S9