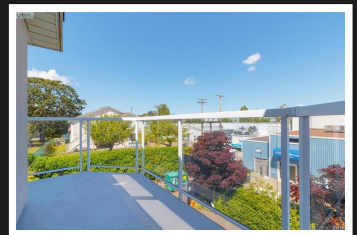
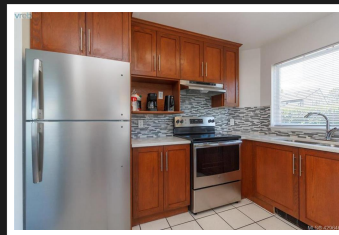
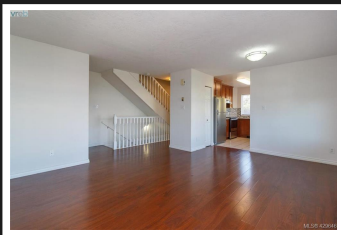


PEMBERTON  
HOLMES

· ESTABLISHED 1887 ·

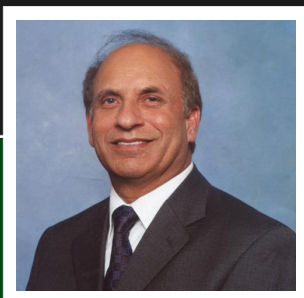
# EXCELLENT GATEWAY TOWN HOME

9-478 Culduthel Rd



9-478 Culduthel Rd

OPEN HOUSE SAT. 2-4PM. POPULAR UPTOWN AREA. Excellent large town home built in 1992. 4 bedroom and 4 bathrooms. Recently renovated kitchen with oak cabinets, granite counters, stainless steel appliances and renovated bathrooms. Full Basement with single garage and 2 extra parkings. Lots of built-in cabinets in the garage. Very convenient location close to schools, shopping malls and bus routes. All the measurement are approximate, verify if important to the buyer. Don't miss this! Call to view today.



**Priced at**  
**\$619,900**

Area	Gateway	Age	1992
Bedrooms	4	Taxes	2672
Bathrooms	4	Tax Year	2019
Lot Size	0.05	MLS#	429646
Floor Space	1592	Parking	2 Spaces

GURCHARAN CHAUHAN

Pemberton Holmes - Cloverdale

Scan this QR  
Code with your  
smart phone



(250) 384-8124  
gchauhan@telus.net  
gurcharanchauhan.com

150 - 805 Cloverdale Ave  
Victoria, V8X 2S9