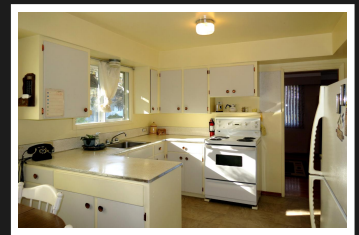
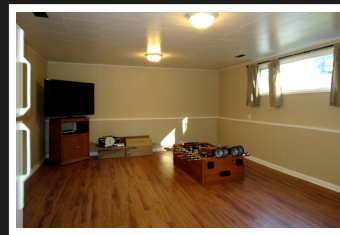
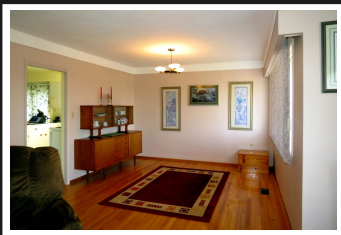


PEMBERTON  
HOLMES

· ESTABLISHED 1887 ·

# LOVELY FAMILY HOME

## 1173 Highrock Pl

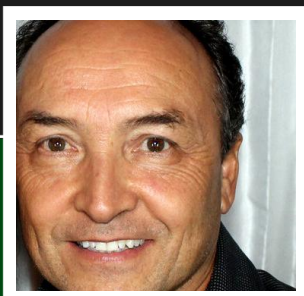


### 5 BEDROOMS, 2 BATHROOMS

Nestled on a quiet cul-de-sac near scenic Highrock Park, you'll find this lovely three bedroom family home. With over 2,100 sq. ft of living space on two levels including a 1-2 bedroom suite downstairs, this home offers exceptional value today. This prime residential location situated on a quiet and private .25 acre fenced lot provides a spacious yard for kids and pets alike. Some improvements include a re-shingled roof, heat pump and 200 amp electrical services. In addition, the home features original oak hardwood floors throughout the main floor. Natural gas connection is also available on the street. Bring your renovation and decorating ideas along to complement this solidly built home. Close proximity to park, schools including cole Victor-Brodeur, bus, shopping and the Esquimalt Rec. Center. Quick possession available. First time on market...don't miss it!

**Priced at**  
**\$785,000**

Area	Rockheights	Age	1959
Bedrooms	5	Taxes	4444
Bathrooms	2	Tax Year	2017
Lot Size	0.25	MLS#	384959
Floor Space	2152	Parking	2 Spaces



**WALLY GREGORA**

Pemberton Holmes - Cloverdale

Scan this QR  
Code with your  
smart phone



(250) 384-8124  
wgregora@shaw.ca  
<http://www.wallygregora.com>

150 - 805 Cloverdale Ave  
Victoria, V8X 2S9