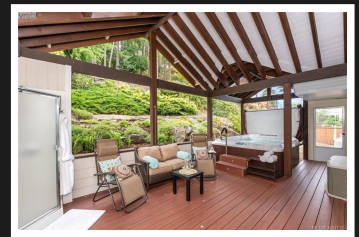


PEMBERTON  
HOLMES

· ESTABLISHED 1887 ·

# 3396 ROCKWOOD TERRACE



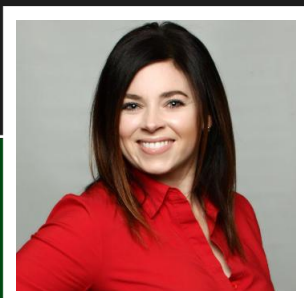
## An Extraordinary Family Home

6bedrooms/4baths, incl a fully legal 3bedrm suite bringing great earning potential. Outdoor terraced living space with built in irrigation system offers ocean views in a family oriented neighbourhood. Main floor open concept, exotic Brazilian hardwood floors, granite countertops, gas fireplace, large dining & living space with a high grade paint projector wall. Generous sized bedrooms & master complete with 3pc ensuite. Stunning suite with large living room & gas fireplace. This could also be used as a second living area for the main part of the house. Open concept suite features large maple kitchen with island & granite countertops. Separate laundry & excellent sound proofing makes this space very private. This energy efficient home is heated and cooled with heat pump + baseboard heating. Outdoor space includes a composite deck with in-deck lighting and an outdoor shower to complement a 9-person Jacuzzi hot tub.

**Priced at**  
**\$965,000**

Area Royal Bay  
Bedrooms 6  
Bathrooms 4  
Lot Size 0.36  
Floor Space 3184

Age 2002  
Taxes 4927  
Tax Year 2019  
MLS# 420735  
Parking 4 Spaces,



**GILLIAN MANDVILLE**

Pemberton Holmes - Cloverdale

Scan this QR  
Code with your  
smart phone



(250) 384-8124  
gillian@capitalcitygroup.ca  
gillianmandville.com

150 - 805 Cloverdale Ave  
Victoria, V8X 2S9