



53015b Highway 47

\$469,000 53015B Highway 47



Country Living Close to Town!

Acreage living close to town! Located close to town (just 2.5 km down the Robb road) this well-maintained 4 bedroom 2 bath home is situated on 3.11 acres. The gorgeous two tiered cedar deck over looks both a beautiful view and a stone fire pit area. A country kitchen leads to a formal dining room and sitting room. The large master bedroom boasts enough room for a king sized bed, night tables, dresser and more. Mature trees and a beautiful yard offer privacy and room to play while the 30x50 shop, wired for 220, makes an ideal Man Cave. Next to the shop is a 14x50 enclosed lean-to with garage doors at each end for ease of access. Driveway is Cadomin rock with two access points. This home is a must see!

Area	ER Edson Rural	Age	1975
Bedrooms	4	Taxes	2112
Bathrooms	2	Tax Year	2018
Lot Size	3.11	MLS#	46618
Floor Space	1428	Parking	Det'd Garage, Other, Heated



To view interactive floor plans scan this QR code with your smart phone



Adrienne Tait
ROYAL LEPAGE EDSON REAL ESTATE

(780) 728-3277

202 50 Street; P.o. Box 7675
atait@royalpage.ca
<http://www.adriennetait.ca>

53015b Highway 47



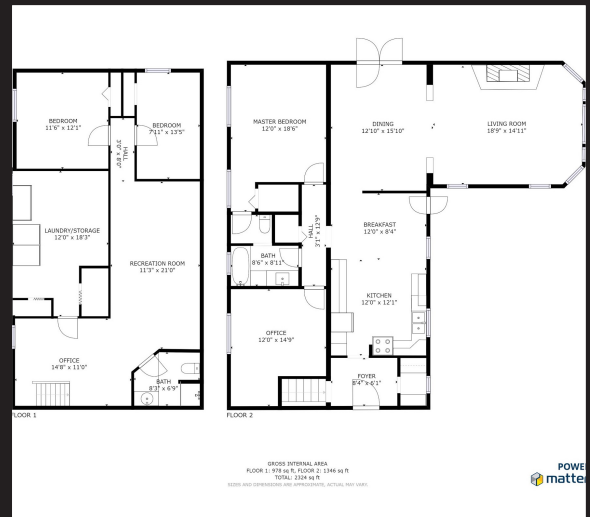
Immaculate Acreage

This incredible acreage shows pride of ownership throughout. From the gorgeous flowering trees and rock garden to the two-tiered cedar deck, the outside is just the beginning. Several upgrades have been done in recent years including:

Shingles - 4 years ago
Hot water tank - 2012
Furnace - 2014

Fabulous features include:

Laundry chute
Movable island that stores in the kitchen cabinet
Jack and Jill bath granite counter top and lots of storage
Natural gas plumbed in for BBQ
Gas fireplace
30x50 shop with 6" concrete slab floor wired for 220
And much much more! This is a must see!



Adrienne Tait

ROYAL LEPAGE EDSON REAL ESTATE

(780) 728-3277

202 50 Street; P.o. Box 7675

atait@royallepage.ca

<http://www.adriennetait.ca>