

Luxurious Rancher On the 8th Fairway
 Wonderful Location & Home with Beautiful Gardens
\$799,500
 3240 Majestic Drive, Crown Isle, Courtenay



Location: Courtenay
 Bedrooms: 3
 Baths: 2
 Ensuite: Yes
 Floor Space: 1,765 sq ft
 Lot Size: .21 ac
 Taxes: \$ 6,137. (2019)
 Parking: Double Garage
 MLS No: 462530

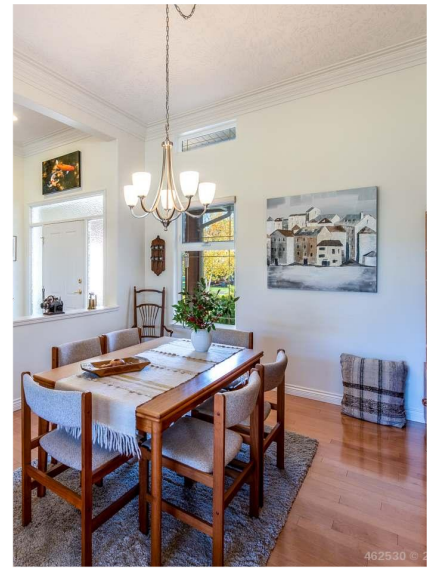
Prestigious Crown Isle Golf Resort Rancher
 luxurious & meticulous custom rancher, with amazing southwest mountain & fairway views. The open concept layout is fantastic for entertaining or just enjoying. Bright & airy the main rooms overlook a full size patio & professionally landscaped gardens with irrigation & views of the 8th Fairway, forest & mountains. Enjoy the nearby amenities and services of both Comox & Courtenay.



BrianWillis.ca
 Personal Real Estate Corporation

brian@brianwillis.ca
 T: 250.334.9900 C: 250.218.6789
 Toll Free: 1 877.216.5171
 2230 Cliffe Ave. Courtenay, BC V9N 2L4





3240 Majestic Drive

The open concept layout is fantastic for entertaining or just enjoying. 11 ft ceilings accent the great room & separate dining room with stunning feature windows, crown moldings & full height stone faced fireplace. The Gourmet kitchen with skylight has cherry cabinets, large eating bar & prep island, built in appliances & wine fridge. Bright & airy the main rooms overlook a full size patio & professionally landscaped gardens with irrigation & south west views of the 8th Fairway, forest & mountains. The spacious master suite has 4 pc ensuite & walk-in closet. Must be seen to be appreciated!

For more information
and to view contact
Brian at 250-218-6789
or email
brian@brianwillis.ca.

Additional information
and photo's can be
viewed at
www.brianwillis.ca



BrianWillis.ca
Personal Real Estate Corporation

brian@brianwillis.ca
T: 250.334.9900 C: 250.218.6789
Toll Free: 1 877.216.5171
2230 Cliffe Ave. Courtenay, BC V9N 2L4

