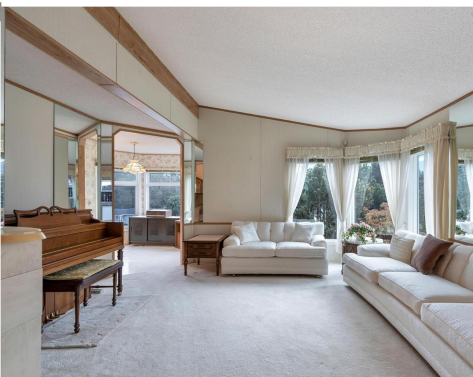




**PEMBERTON  
HOLMES** REAL ESTATE  
ESTABLISHED 1887

## Kerry Village at Mill Bay



**1057 Bourban Rd**

**\$449,000**

Welcome to Kerry Village, a unique community offering a bare land strata where you own your own lot and simply pay a low \$50.00 strata fee. This welcoming 55+ community consists of 64 homes in a lovely quiet rural setting that is close to shopping, recreation opportunities, marina and only a short drive to Victoria. This 2 bed 2 bath mobile on basement offers large room sizes, plenty of natural light, a basement hobby or workshop area with single car garage as well as a separate storage area and plenty of covered deck and patio space. This is the ideal retirement destination offering an easy Vancouver Island lifestyle.

## FEATURES

<b>Area</b>	<b>Mill Bay</b>
<b>Bedrooms</b>	<b>2</b>
<b>Bathrooms</b>	<b>3</b>
<b>Lot Size</b>	<b>5003</b>
<b>Floor Space</b>	<b>1810</b>
<b>Age</b>	<b>1989</b>
<b>Taxes</b>	<b>2247</b>
<b>Tax Year</b>	<b>2022</b>
<b>MLS#</b>	<b>921435</b>
<b>Parking</b>	



## Jason Finlayson

(250) 746-8123  
cowichanrealtor@gmail.com  
[www.jasonfinlayson.com](http://www.jasonfinlayson.com)

23 Queens Road



**PEMBERTON  
HOLMES** REAL ESTATE  
ESTABLISHED 1887