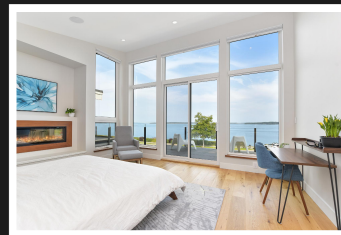
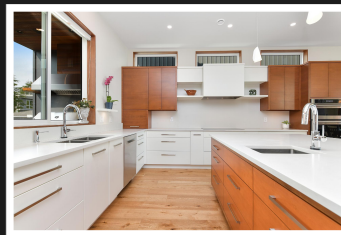
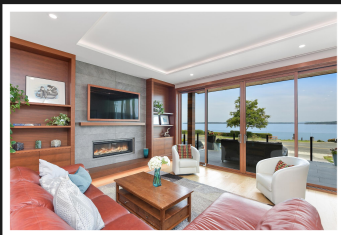


PEMBERTON
HOLMES

· ESTABLISHED 1887 ·

BREATHTAKING OCEAN VIEW

9344 Lochside Dr., Sidney



Almost New! 7 Bedrooms, 5 Bathrooms, 2-Bdr Legal Suite

STUNNING OCEAN VIEW that's right across from the beach! GORGEOUS 2019-built Jenny Martin designed home is finished with top-of-the-line fixtures in a perfect balance of modern style and warm wood. Every detail has been thoughtfully customized. Outstanding features include the living room's floor-to-ceiling wall of windows that opens to the ocean view patio, engineered floating staircase with glass railing & under-step lighting, custom built greenhouse, and a built-in outdoor 42" Twin Eagles BBQ kitchen system. The enormous kitchen with white & fir cabinets, 3 sinks & a pantry is sure to be your favourite room until you see the Primary bedroom with 12ft vaulted ceiling & floor-to-ceiling windows that open onto an exquisite ocean view balcony, plus a beautiful ensuite & enormous walk-in closet. This entire home is bright and airy with 10ft ceilings, floor-to-ceiling windows, huge skylights, and wide plank white oak flooring. BONUS! 2-Bdr legal suite plus a workshop in the garage



Priced at
\$2,749,000

Area	Sidney SE	Age	2019
Bedrooms	7	Taxes	\$6152
Bathrooms	5	Tax Year	2023
Lot Size	6156sf	MLS#	957713
Floor Space	4014sf	Parking	Dbl Garage

NICOLE BURGESS

Pemberton Holmes - Cloverdale

Scan this QR
Code with your
smart phone



(250) 384-8124
nicole@nicoleburgess.com

150-805 Cloverdale Ave
Victoria, V8X 2S9