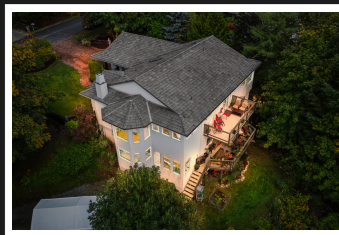


PEMBERTON
HOLMES

· ESTABLISHED 1887 ·

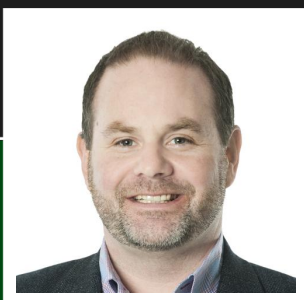
11287 HICKORY DR



Privately situated on 1.08 acres, this bright & inviting 3,600 sq/ft custom home boasts 5 beds/4 baths w/ a ONE BEDROOM SUITE. Inside, the main level includes spacious room dimensions, wood floors, over-sized windows, custom blinds & skylights. Sunken living room w/ gas f/p, generous dining room for family gatherings & a well appointed kitchen w/ stone counters adjoining an eating area w/ picturesque views. Sizable master suite w/ walk-thru closets & 4-piece ensuite. The lower level provides a great division of space for the growing family w/ 2 bedrooms, 3-piece bath & massive rec/media room. Totally separate 1 bedroom suite w/ own laundry. Endless attic & crawlspace storage, RV parking & an unparalleled workshop for the woodworking enthusiast. Enjoy outdoor living from the various decks or venture out into your own park land w/ fire pit area & natural landscape.

Priced at
\$1,090,00

Area	Lands End	Age	1989
Bedrooms	5	Taxes	3387
Bathrooms	4	Tax Year	2019
Lot Size	1.08	MLS#	419924
Floor Space	3613	Parking	Attached



STEPHEN POSTINGS

Pemberton Holmes - Sidney

Scan this QR
Code with your
smart phone



(250) 656-3486
stephenpostings@gmail.com
www.stephenpostings.com

107 - 2360 Beacon Ave
Sidney, V8L 1X3