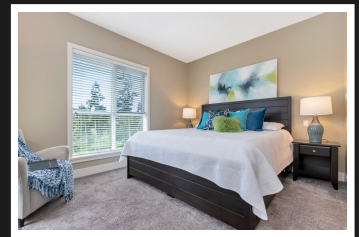
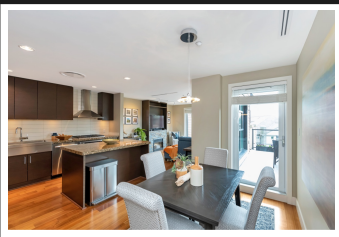


PEMBERTON
HOLMES

· ESTABLISHED 1887 ·

BRIGHT, OPEN CONCEPT UNIT

502-1400 Lynburne Pl

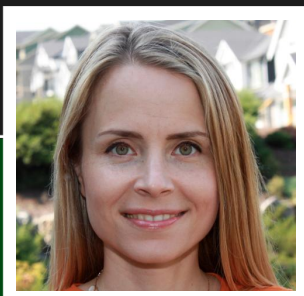


502-1400 Lynburne Pl

Welcome to Finlayson Reach, the ultimate resort lifestyle building in the heart of the Bear Mountain Village. This bright, cheerful and sunny south facing corner unit 2 bedrooms&2 full bathrooms offers an open concept floor plan with 9' ceilings, high-end stainless steel appliances, granite counter tops, forced air, A/C, electric FP, ensuite, soaker tub, built-in work area, new carpets and in suite laundry. Bounce, a large wraparound patio with gas BBQ hook up just in time for a warm and sunny summer season. Busy views of the golf course, Finlayson and Westin Hotel for entertainment and enjoyment all day long. This amazing concrete framed building is loaded with amenities: 2 squash courts, lounge area, 15 seat movie theater, game room&gym, secure underground parking&more. Unrestricted rentals & pet friendly. Steps from the world-class Bear Mountain Golf Resort, restaurants, shops, hiking & bike trails, rec center w/outdoor pool & gym. Don't miss this opportunity - call today!

Priced at
\$569,900

Area	Bear	Age	2008
Bedrooms	Mountain	Taxes	2433
Bathrooms	2	Tax Year	2019
Lot Size	2	MLS#	426374
Floor Space	0.03	Parking	1 Space
	992		



ANNA STERLOFF

Pemberton Holmes - Westshore

Scan this QR
Code with your
smart phone



(250) 478-0779
anna.sterloff@gmail.com
sterloffrealestate.ca/

103 - 814 Goldstream Ave
Victoria, V9B 2X7