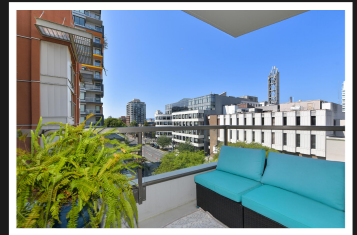
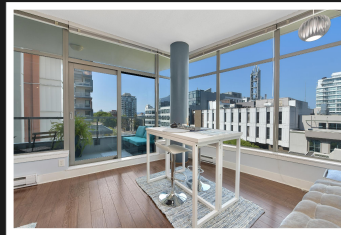
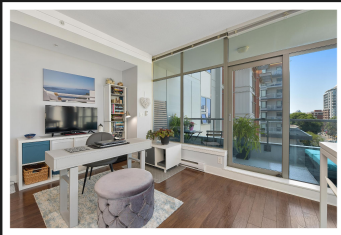


PEMBERTON  
HOLMES

· ESTABLISHED 1887 ·

# GLAMOUROUS CONDO!

*505-845 Yates St*



## Stylish 1 Bedroom Downtown Condo

This stylish downtown condo is outstanding with wall-to-wall windows that bathe the space in light. There's ample living space, a dining area, work space, and a big balcony. Engineered wood floors, stone countertops, a fireplace, over 9ft ceilings, and a new stove & microwave add to the glamour! The iconic Wave concrete & steel building is very quiet, well maintained, offers a well-equipped gym, secure bike storage, and a tranquil inner-courtyard with a water feature ideal for chilling-out. Two pets are welcome and hot-water is included in the monthly strata fees! Right across the street is The Market on Yates & London Drugs. Surrounded by every amenity, this location offers you walking distance to everything! It's just a 10-minute walk to the Inner Harbour, Dallas Rd, and Beacon Hill Park. If you have a vehicle, convenient underground secure parking is available across the street or a block away.



**Priced at**  
**\$472,900**

Area	Downtown	Age	2006
Bedrooms	1	Taxes	\$2449
Bathrooms	1	Tax Year	2024
Strata Fee	\$422/mo	MLS#	975902
Floor Space	766sf	Parking	None

**NICOLE BURGESS**

Pemberton Holmes - Cloverdale

Scan this QR  
Code with your  
smart phone



(250) 384-8124  
nicole@nicoleburgess.com

150-805 Cloverdale Ave  
Victoria, V8X 2S9