

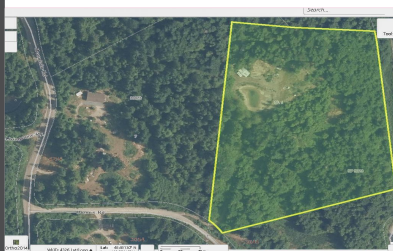
SL 1 Humes Rd

\$599,900

SL 1 Humes Rd



Area Cobble Hill
Bedrooms 0
Bathrooms 0
Lot Size 430372.8
Floor Space
Age
Taxes 1750
Tax Year 2020
MLS# 866507
Parking



SL 1 Humes Rd

Rare, natural park-like, peaceful, secluded 10 acres located 15 minutes south of Duncan in the historic Kinsol Valley. Serviced by Humes Rd off Mountain Rd. Adjoins the scenic Trans Canada Trail, great for hiking, biking & horse back riding. The absentee owner built a long driveway with hydro line installed to a choice, private, level house-site ready to build on that includes mountain views, seasonal pond, drilled well, pump house, septic system, and framed, roofed workshop. Strata lot fee \$60 per month to cover exclusive Humes Road maintenance; grading, snow removal etc. No GST. Zoning allows for suite. This is a dream opportunity for a unique lifestyle in the beautiful Cowichan Valley on world famous Vancouver Island.



To view interactive floor plans scan this QR code with your smart phone

Grant & Nathan Clement
Sutton Group West Coast Realty - Duncan

(250) 748-5000

2610 Beverly Street
nathan@clementrealestate.com
ClementRealEstate.com



SL 1 Humes Rd

\$599,900



SL 1 Humes Rd

Grant & Nathan Clement
Sutton Group West Coast Realty - Duncan

(250) 748-5000
2610 Beverly Street
nathan@clementrealestate.com
ClementRealEstate.com

