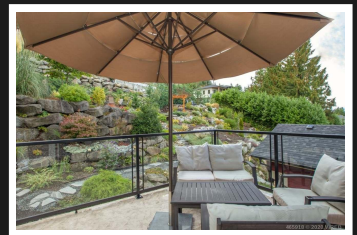
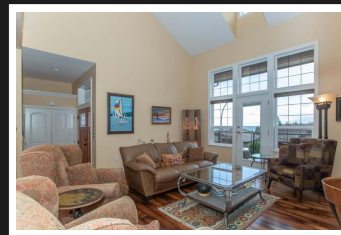
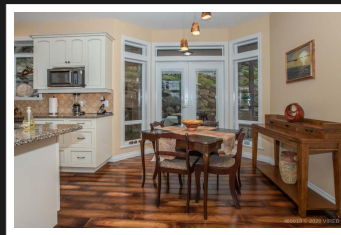
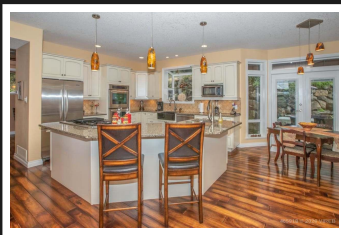


PEMBERTON  
HOLMES

· ESTABLISHED 1887 ·

# OCEAN VIEW EXECUTIVE HOME

Custom designed, quality throughout



842 Craig Road

Custom built 3+ bdrm dream home with lovely ocean views. Attention to detail & appreciation for quality is apparent in every aspect of this home, custom built by Doug Judson Contracting. Smart Lap Siding exterior, high efficiency heat pump, matching quartz counters in the kitchen & bathrooms, high end appliances & fixtures, see-thru fireplace, custom tinted tin ceiling, heated Italian tile floor & jetted tub in ensuite, massive walk-in closet, exposed aggregate & flagstone patios, plus so much more.

**Priced at**  
**\$779,900**

Area	Z3 Ladysmith	Age	2009
Bedrooms	3	Taxes	5895
Bathrooms	4	Tax Year	2019
Lot Size	0.2	MLS#	465918
Floor Space	2793	Parking	Garage



**DENISE TUTTE**

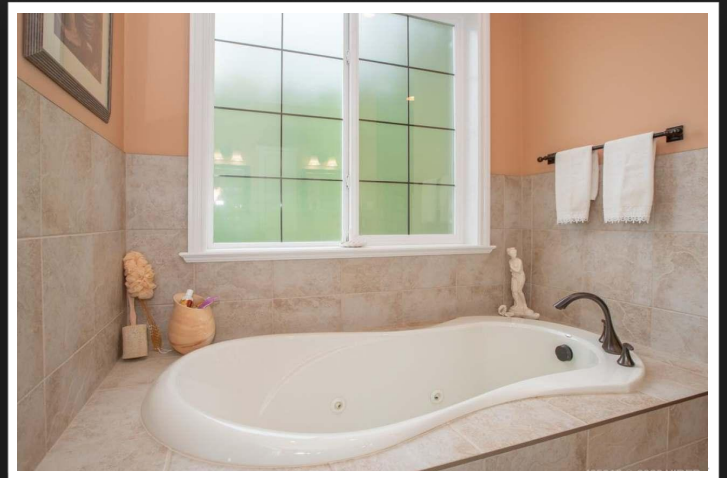
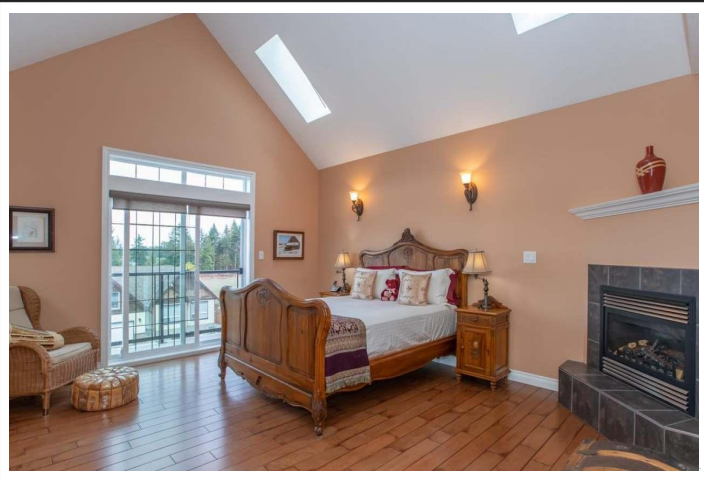
Pemberton Holmes - Ladysmith

Scan this QR  
Code with your  
smart phone



(250) 924-0113  
denisetutte@gmail.com  
www.VanIsleRealEstate.com  
P.o. Box 1443 - 516 1st Avenue  
Ladysmith, V9G 1A7





## 842 Craig Road

The kitchen is ideal for family gatherings & boasts double built in ovens, oversized sink plus additional sink in the island, downdraft ventilation for the gas stove, & an abundance of counter & storage space. The spacious master suite boasts a romantic gas fireplace & private ocean view deck. Even the guest room has a private balcony overlooking the terraced back yard. Many skylights & thoughtful planning of windows allow for plenty of light. Definitely a must see home.



**DENISE TUTTE**

Pemberton Holmes - Ladysmith

(250) 924-0113  
denisetutte@gmail.com  
www.VanIsleRealEstate.com

P.O. Box 1443 - 516 1st Avenue  
Ladysmith, V9G 1A7