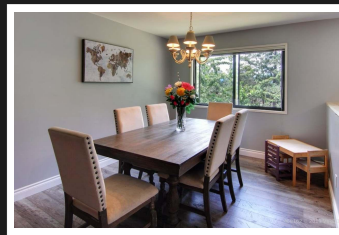
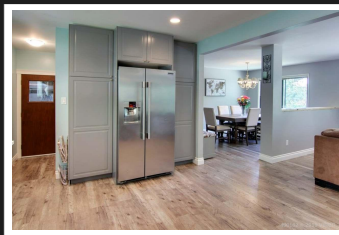
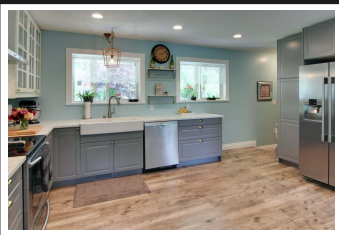


PEMBERTON
HOLMES

· ESTABLISHED 1887 ·

MAPLE BAY SOLID FAMILY HOME

1287 Janet Place



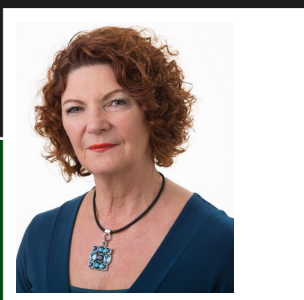
1287 Janet Place

MAPLE BAY 0.82 acre property welcomes your family to open concept, updated home, with fresh and modern ambiance. Welcoming foyer leads to a spacious and homey main floor great for living and entertaining. Living room has large bay windows with views of the park like, rear back yard. Plenty of space to create tasty memories in the attractive, large kitchen with farmer's sink, glass fronted upper cabinets and stainless appliances. Main floor 3 bedroom wing includes a large family bathroom with double sinks. Lower level includes a 3 pc bath, bedroom and family room and wine cellar. Large flex space for media room, gym, or games and play area. Zoned for additional accommodation. Extra-large garage with separate indoor workshop. Covered front and back patios overlook a large, flat, backyard with mature fruit trees. Subdivision potential. Close to schools and Maple Bay for beach combing, kayaking, marina & float planes.

Priced at
\$659,000

Area	Z3 East
Bedrooms	Duncan
Bathrooms	4
Lot Size	2
Floor Space	0.82
	3027

Age	1983
Taxes	4342
Tax Year	2019
MLS#	458162
Parking	Garage - Dble



SANDRA
CARSWELL
Pemberton Holmes Duncan

Scan this QR
Code with your
smart phone



(250) 746-8123
sandra@sandracarswell.ca
<http://sandracarswell.ca>

23 Queens Road
Duncan, V9L 2W1