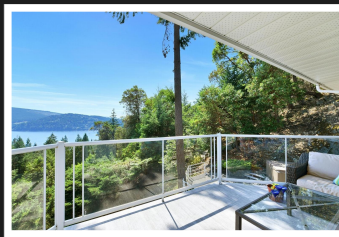
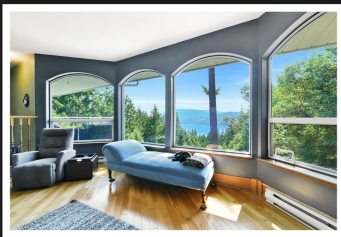


PEMBERTON
HOLMES

· ESTABLISHED 1887 ·

MAPLE BAY OCEAN VIEW

567 Maple Mountain Rd



567 Maple Mountain Rd

Ocean views & ideally located in one of Duncan's most sought-after areas. This superbly kept 2308 sq ft, 4 bed 3 bath executive home is perched on .57 acres on Maple Mountain offering a rare sunny southern facing aspect with gorgeous ocean views of Maple Bay. The long, gated driveway combined with mature landscaping provides excellent privacy. The well manicured landscaping extends throughout the property which also features level lawn area, extensive patios, decks, water feature, firepit, and hot tub all designed to enjoy the great outdoors. Attention to detail is not lost once inside this beautiful home. Notable features include generous use of windows to create a bright and cheerful atmosphere. The formal living room and huge updated kitchen each boast ocean views and the warmth of hardwood flooring.



Priced at
\$1,289,000

Area	East Duncan	Age	1991
Bedrooms	3	Taxes	5087
Bathrooms	3	Tax Year	2021
Lot Size	24829	MLS#	896209
Floor Space	2308	Parking	

JASON FINLAYSON

Pemberton Holmes - Duncan

Scan this QR
Code with your
smart phone



(250) 746-8123
jowichanrealtor@gmail.com
www.jasonfinlayson.com

23 Queens Road
Duncan, V9L 2W1