



HOME SALES & RENTALS

Our Town. Your Town. Mountain Town.

MountainTownProperties.ca

Box 2277, 2020 Washington Street,
Rossland BC V0G 1Y0



204-4310 RED MOUNTAIN ROAD

\$645,000

204B SUITE IN GREAT CONDITION

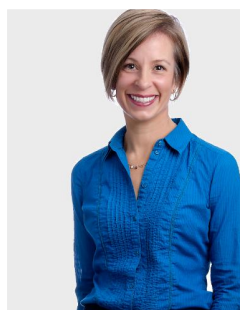
Luxury ski-in ski-out condo at the base of Red Resort-Slalom Creek – the perfect location for those seeking a prime ski-in and ski-out experience.

This condo has been used only seasonally and almost exclusively by its owner and so is in great shape! It's furnished as a three-bedroom, complete with quality/clean appliances, bedding, linens and in-suite laundry. Although used by the owner only a few months a year the kitchen is extra well stocked and appointed with modern kitchen gadgets and appliances. Comfort of the wood floors, heated tiles and gas fireplace and the quality and appeal of the solid wood doors, trims. The primary bedroom features a spacious ensuite bathroom with a steam shower and double sinks.

The hot tub has been well maintained. Take advantage of the building's convenient amenities: ski locker, fitness, theatre, games, elevator, and heated underground parking just steps away from the slopes. Shop and compare! Large square footage, quality, location, price, NO GST = exceptional value! Monthly condo fee is \$416/month

FEATURES

- Never Rented
- Well Appointed with extra kitchen gadgets
- Fully Furnished
- NO GST
- Hot Tub
- Fireplace
- Heated Parking, Designated 1 Spot
- Excercise & Games Room



JODIE OUIMET

Managing Broker

C. 250-368-7166

E. jodie@mountaintownproperties.ca

W. MountainTownProperties.ca