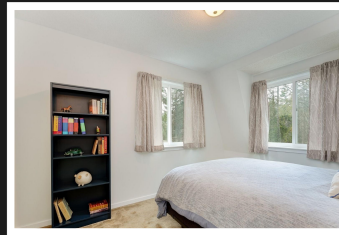


PEMBERTON
HOLMES

· ESTABLISHED 1887 ·

952 WOODCREEK PL



Escape to your own private sanctuary nestled amidst the lush forests of the West Coast. Situated on a sprawling 1.64-acre lot, this 4-bedroom, 3-bath has endless potential. Entertain with ease, a large eat in kitchen ample counter space & professional gas range ideal for the chef in you. Separate dining room, large rec room ensures there's always a place for everyone to enjoy. The large shop perfect for your creative side. Or store your prize vehicles. Guest suite? rental income? 2-bedroom, 1-bathroom suite with kitchenette. Previously operated as the charming Woodcreek B&B. The backyard boasts a mature vegetable garden with irrigation system & electricity, plenty of room for horses, chickens & greenhouses or just a perfect place for you and your family to kick back and enjoy. You can also explore the nearby hiking trails, stroll leisurely through the forest, or make your way to the seaside. Includes 1/13 Interest In 6 Acre Greenspace.



Priced at
\$1,485,000

Area	Deep Cove	Age	1980
Bedrooms	6	Taxes	5112
Bathrooms	4	Tax Year	2023
Lot Size	71438.4	MLS#	965325
Floor Space	3732	Parking	Attached

LISAREDDING

Pemberton Holmes - Sidney

Scan this QR
Code with your
smart phone



(250) 656-3486
lkredding@shaw.ca

107-2360 Beacon Ave
Sidney, V8L 1X3