



2606 Farrell Road



WELCOME HOME!

Are you all about the view? Are you ready to buy a beautiful home at a spectacular price? Then you'll love this welcoming 4 bdrm, 4 bath home with ocean views in two directions! Check out this spacious 2316 sqft home in desirable south Ladysmith with a fenced back yard, front and back decks, and a terrific layout. Room for plenty of cooks in the kitchen, and enjoy dinner overlooking the harbour. The white kitchen cabinetry, cathedral ceiling, and ample windows welcome the light. Ample parking, attractive landscaping, and suite potential - with that amazing ocean view - tick more boxes. This is a home to settle down in. Major Price Change! Owners are moving and currently operating as a popular guest house. Ready to see for yourself?

Area	Z3 Ladysmith	Age	2009
Bedrooms	4	Taxes	4255
Bathrooms	4	Tax Year	2019
Lot Size	0.17	MLS#	459636
Floor Space	2316		



To view interactive floor plans scan this QR code with your smart phone



Carol Warkentin*
RE/MAX Ocean Pointe Realty (LD)

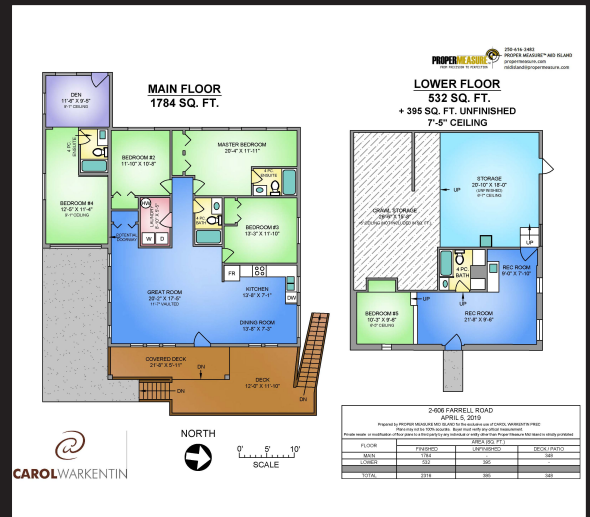
(250) 667-7653
Box 970, 640 Trans Canada Hwy
itscarol@shaw.ca
www.itscarol.ca

2606 Farrell Road



HOME SWEET HOME

Are you all about the view? Are you ready to buy a beautiful home at a spectacular price? Then you'll love this welcoming 4 bdrm, 4 bath home with ocean views in two directions! Check out this spacious 2316 sqft home in desirable south Ladysmith with a fenced back yard, front and back decks, and a terrific layout. Room for plenty of cooks in the kitchen, and enjoy dinner overlooking the harbour. The white kitchen cabinetry, cathedral ceiling, and ample windows welcome the light. Ample parking, attractive landscaping, and suite potential - with that amazing ocean view - tick more boxes. This is a home to settle down in. Major Price Change! Owners are moving and currently operating as a popular guest house. Ready to see for yourself?



Carol Warkentin*

RE/MAX Ocean Pointe Realty (LD)

(250) 667-7653

Box 970, 640 Trans Canada Hwy
itscarol@shaw.ca
www.itscarol.ca

