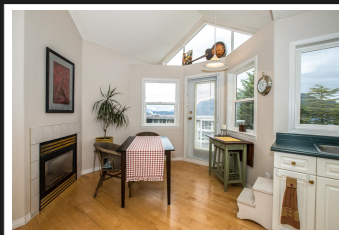


PEMBERTON
HOLMES

· ESTABLISHED 1887 ·

OCEAN VIEW TOWNHOME

29-1700 Pritchard Road

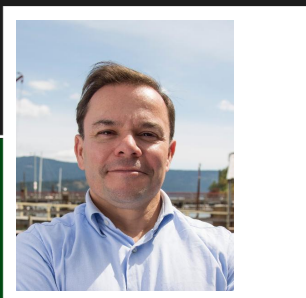


29-1700 Pritchard Road

West coast seaside living at its best! Ideally located only a short stroll from the Cittaslow community of Cowichan Bay Village, this quiet end unit ocean view condo will impress. The main level entry opens to the formal dining area and sunken living room with double sided gas fireplace it shares with the kitchen. Doors from both the living room and kitchen lead to the large ocean view deck ideal for entertaining or relaxing spring evenings. The vaulted ceiling and generous use of window offers a bright and cheery atmosphere in the kitchen and eating nook areas. The remainder of the main level consists of a 2 piece powder room and double car garage. The lower level offers the large master and second bedroom each with their own full ensuite baths, the laundry room and storage room also. The home has been lovingly cared for and pride of ownership is evident. Enjoy Cowichan Bay's shops, restaurants, tour operators, marinas and so much more .

Priced at
\$449,000

Area	Z3 Cowichan Bay	Age	1998
Bedrooms	2	Taxes	2795
Bathrooms	3	Tax Year	2017
Lot Size		MLS#	437814
Floor Space	2000	Parking	2 Spaces



JASON FINLAYSON

Pemberton Holmes - Duncan

Scan this QR
Code with your
smart phone



(250) 746-8123
cowichanrealtor@gmail.com
www.jasonfinlayson.com

23 Queens Road
Duncan, V9L 2W1