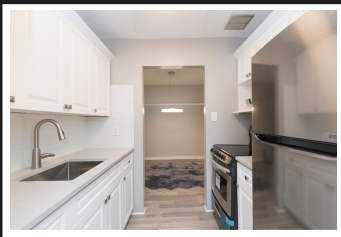


PEMBERTON
HOLMES

· ESTABLISHED 1887 ·

HEARTHSTONE CONDO

206-3244 Seaton St



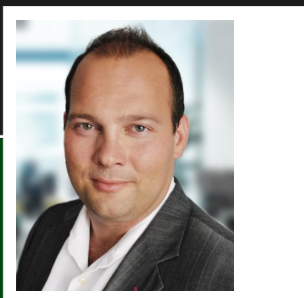
206-3244 Seaton St

Beautifully updated top floor condo. The Hearthstone building is a boutique, 15-unit, pet-friendly, 19+ building. Everything in this condo works, starting with the modern colour palette and the silverwood flooring throughout. The barn door leading to the laundry room and the wood burning fireplace bring some old world charm into the space. You'll feel the spaciousness, highlighted by wide hallways and large rooms - which you won't find in most modern builds. The built-in cupboards in the laundry room provide ample storage for your linens and towels and there are two closets at the entrance and two master bedroom closets. You won't be short on storage in this condo! You'll love cooking in the updated kitchen with its quartz countertops, white subway tiles stretching up the walls, and the brand new stainless steel fridge and stove. The patios on the building were enclosed many years ago creating additional living space, currently used as both a bedroom (no closet) and a den.

Priced at
\$349,000

Area	Tillicum
Bedrooms	2
Bathrooms	1
Lot Size	0.02
Floor Space	833

Age	1971
Taxes	1076
Tax Year	2017
MLS#	392728
Parking	1 1 Spot



JEFF MARTENS*

Pemberton Holmes - Cloverdale

Scan this QR
Code with your
smart phone



(250) 812-6492
jeff@jeffmartens.ca
www.jeffmartens.ca

150 - 805 Cloverdale Ave
Victoria, V8X 2S9