



HOME SALES & RENTALS

Our Town. Your Town. Mountain Town.

MountainTownProperties.ca

Box 2277, 2020 Washington Street,
Rossland BC V0G 1Y0



8000 DEVITO DRIVE

8000 Devito Drive

\$499,000

UP-ZONED LAND WITH VIEWS

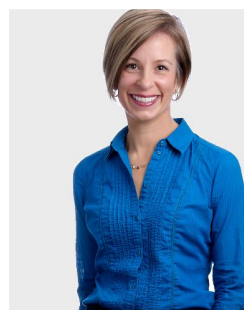
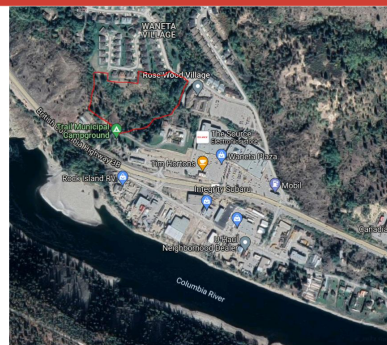
An up-zoned (High-Density Multiple Family Residences, R8) lot along with its adjacent parcel in Trail, British Columbia, makes this 9-acre park-like land assembly ripe for development.

Nestled between the beautiful Monashee and Selkirk Mountains it has both mountain and river views. The up-zoned (for multi-family dwellings) parcel is located on Devito Drive with its services, just above the Rose Wood Village Seniors Community and a short walking distance to the Waneta Plaza with its shops, services and restaurants.

It's a gorgeous setting with nearby town amenities. Building to maximize the land potential could provide much needed residences that are community-oriented and have access to many local recreational activities including hiking, golfing, biking, fishing and skiing.

FEATURES

- 9.21 Acres Land Assembly
- Minutes from Trail Regional Airport
- Great climate & views
- Services at DeVito Drive
- Neighbouring Rose Wood Village Senior's Community



JODIE OUIMET

Managing Broker

C. 250-368-7166

E. jodie@mountaintownproperties.ca

W. MountainTownProperties.ca