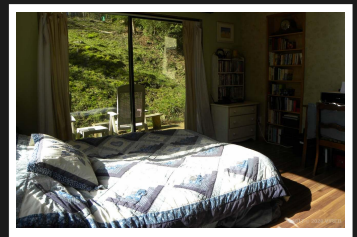
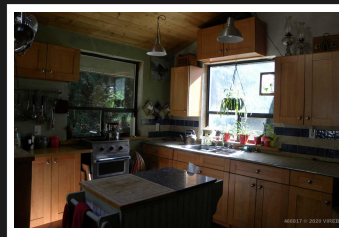
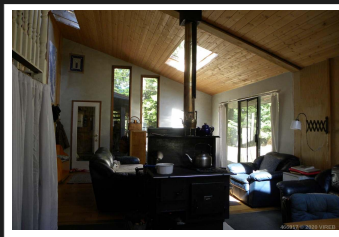


PEMBERTON  
HOLMES

· ESTABLISHED 1887 ·

# LOT 1 HAZELWOOD ROAD

\$365,000



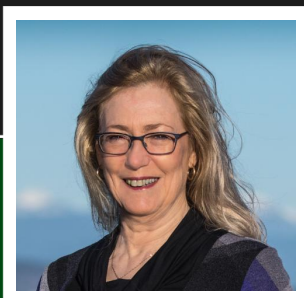
## Lt 1 Hazelwood Road, Lasqueti Island

A very private 10 acre parcel of land with 1300 sqft house nestled beside a bubbling creek for lots of 'off the grid' winter power potential! A picturesque spot w/lots of trees including maple, fir, cedar, hemlock & arbutus line the driveway, golden maple leaves are especially beautiful in the fall. This cozy 2 storey, west coast contemporary house has main level entry w/open concept design, 2 lge bdrms & bath upstairs. Both bdrms have outside deck access thru glass doors. Power system incl 9 solar panels, Magna Sine inverter, Outback controller, bank of batteries & back up generator for power. A main feature is a Pioneer Maid wood cook stove that will keep you warm & cozy. Trails lead on a nice loop walk around entire prpt, there's a fenced garden, outdoor firepit & tent platform for extra guests in the warmer months. Quiet spot is welcoming & comfortable place with lots of potential to add your personal touches. Enjoy the tranquility & privacy at end of a cul de sac with no neighbors in sight!

**Priced at**  
**\$365,000**

Lot Size 10.1  
Floor Space 1300

Age 2005  
Taxes 1206  
Tax Year 2019  
MLS# 466817



**ANNE SPERLING**

Pemberton Holmes - Parksville

Scan this QR  
Code with your  
smart phone



(250) 248-8801  
asperling@bcsupernet.com  
www.oceansideproperty.ca

135 Alberni Hwy  
Parksville, V9P 2G6