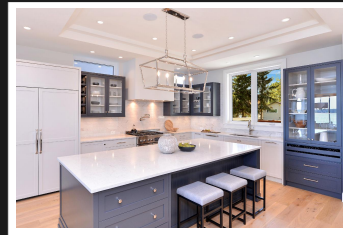
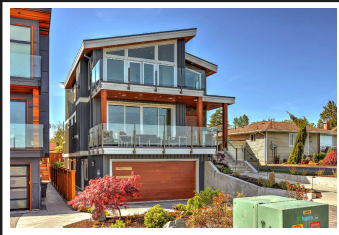


PEMBERTON
HOLMES

· ESTABLISHED 1887 ·

SPECTACULAR OCEAN VIEW

9346 Lochside Dr



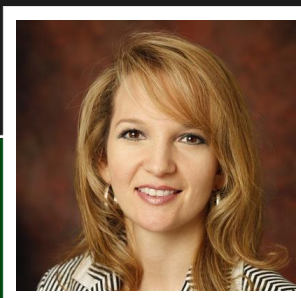
New Construction Home

Right across from the BEACH! This gorgeous NEW home offers a LUXURY LIFESTYLE with 10ft coffered ceilings, wall-to-wall windows, & double glass doors opening out to a huge ocean view deck. The DESIGNER kitchen features a massive quartz-topped island, two-toned customized wood cabinets, & top-of-the-line JennAir 6-burner gas stove w/ griddle & 2 ovens. This spacious home has an upstairs master BDR w/ 12ft vaulted ceiling & a 5pce ensuite with breathtaking views, plus 2 BDRs w/ their own ensuite, 1 BDR/den on the main level, Rec room, & a 2 BDR legal suite w/ separate power, HWT, W/D, & heat. An ELEVATOR for all 3 floors allows you to age in place. Equipped with a heat pump, HW on demand, & finished w/ custom fabricated floating stairs, wide plank oak floors, & polished nickel faucets, there's quality at every turn. PERFECT LOCATION with an easy walk to Sidney, 5 min drive to the airport or BC Ferries, a short walk to 2 parks, & a waterfront walkway at your front door.

Area Sidney SE
Bedrooms 6
Bathrooms 6
Lot Size 6152sf
Floor Space 4201sf

Age 2019
Taxes not yet Avail.
Legal Suite 2 Bdrs
MLS# 411073
Parking DBL Garage

Priced at
\$2,500,000



NICOLE BURGESS

Pemberton Holmes - Cloverdale

Scan this QR
Code with your
smart phone



(250) 384-8124
nicole@nicoleburgess.com

150 - 805 Cloverdale Ave
Victoria, V8X 2S9