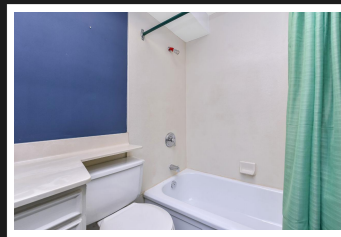
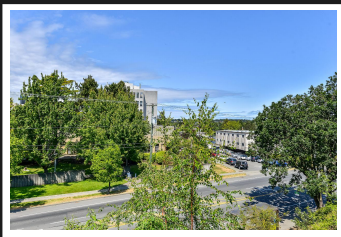


PEMBERTON  
HOLMES

· ESTABLISHED 1887 ·

# BEST PRICED CONDO!

210-1975 Lee Ave



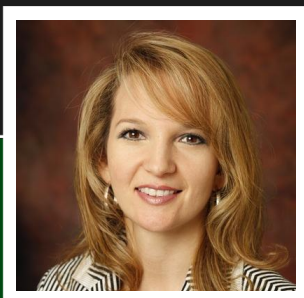
## 1 Bedroom Corner Suite

Opportunity Knocks! This is the BEST PRICED condo on the market! This 1Bdr corner suite has a great northwest outlook over trees and surrounding gardens and is in a FANTASTIC LOCATION! Across from Royal Jubilee Hospital, beside the Fort St/Foul Bay Ave Save-On-Foods Market with cafes, shops, and all the services you need. It's only 1 block from tranquil Redfern Park, 2 blocks from Oak Bay Rec Centre, 3 blocks from Oak Bay Ave and Red Barn Market, and just a short distance to Willows Beach. The building is well run with reasonable monthly fees and welcomes pets, children, and some rentals. Parking is included, is on a main transit route, and is only 5 minutes from downtown. This home can be updated with your own design ideas with minimal investment. It doesn't get better! Note total finished area differs from the strata plan size of 612sf. If size important, please verify

**Priced at**  
**\$222,000**

Area	Jubilee
Bedrooms	1
Bathrooms	1
Strata Fee	\$224/mo
Floor Space	661

Age	1958
Taxes	941
Tax Year	2017
MLS#	392802
Parking	1-Uncovered



NICOLE BURGESS

Pemberton Holmes - Cloverdale

Scan this QR  
Code with your  
smart phone



(250) 384-8124  
nicole@nicoleburgess.com

150 - 805 Cloverdale Ave  
Victoria, V8X 2S9