

N502-737 Humboldt St

N502-737 Humboldt St
\$799,900



Million Dollar SW Views - The Aria

MILLION-DOLLAR SW VIEW of The Empress, Parliament Bldgs, Museum & gardens! This like-new 964sq.ft condo has floor-ceiling/wall-wall windows, 2 separate private bedrooms w/ 2 full-baths & a HUGE 110sf BALCONY creating a RESORT LIFESTYLE everyday! The Aria's LUXURIOUS finishing includes wood floors, granite & marble counters, SS Jenn Air appl., gas stove & fireplace, heated ensuite floor, & in-suite laundry. Incredibly well-maintained building offers fully-equipped gym, steam room, sauna, hotel-style lounge w/ kitchen, onsite-caretaker, a FANTASTIC FULL-TIME CONCIERGE that even offers dry-cleaning! Humboldt Valley location is steps to the Inner Harbour, Beacon Hill Park, Cook Street Village, James Bay, & downtown. Verify size if important



Area	Downtown	Age	2009
Bedrooms	2	Taxes	3430
Bathrooms	2	Tax Year	2018
Lot Size	964 sq.ft	MLS#	413697
Floor Space	947 sq.ft + 110 sq.ft balcony	Parking	1 Space, Underground - Secure, Visitors



To view interactive floor plans scan this QR code with your smartphone



Chris LeBlanc *PREC
Pemberton Holmes - Cloverdale

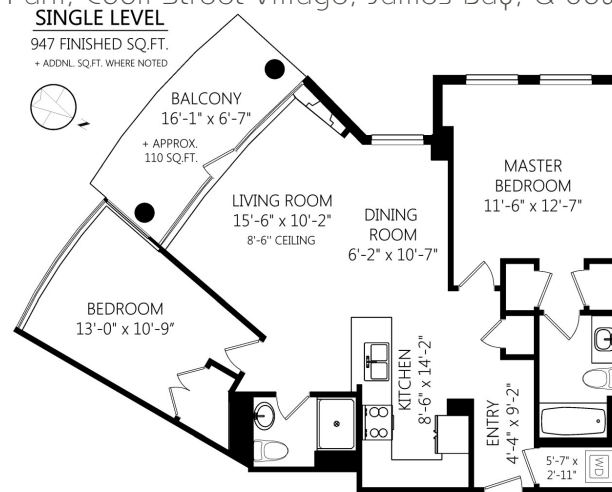
(250) 384-8124

150 - 805 Cloverdale Ave
chris@chrisleblancsells.com
<http://www.chrisleblancsells.com>



Unobstructed SW Views and 110 sq.ft Balcony

MILLION-DOLLAR SW VIEW of The Empress, Parliament Bldgs, Museum & gardens! This like-new 964sq.ft condo has floor-ceiling/wall-wall windows, 2 separate private bedrooms w/ 2 full-baths & a HUGE 110sf BALCONY creating a RESORT LIFESTYLE everyday! The Aria's LUXURIOUS finishing includes wood floors, granite & marble counters, SS Jenn Air appl., gas stove & fireplace, heated ensuite floor, & in-suite laundry. Incredibly well-maintained building offers fully-equipped gym, steam room, sauna, hotel-style lounge w/ kitchen, onsite-caretaker, a FANTASTIC FULL-TIME CONCIERGE that even offers dry-cleaning! Humboldt Valley location is steps to the Inner Harbour, Beacon Hill Park, Cook Street Village, James Bay, & downtown. Verify size if important



Chris LeBlanc *PREC
Pemberton Holmes - Cloverdale

(250) 384-8124

150 - 805 Cloverdale Ave

chris@chrisleblancsells.com

<http://www.chrisleblancsells.com>